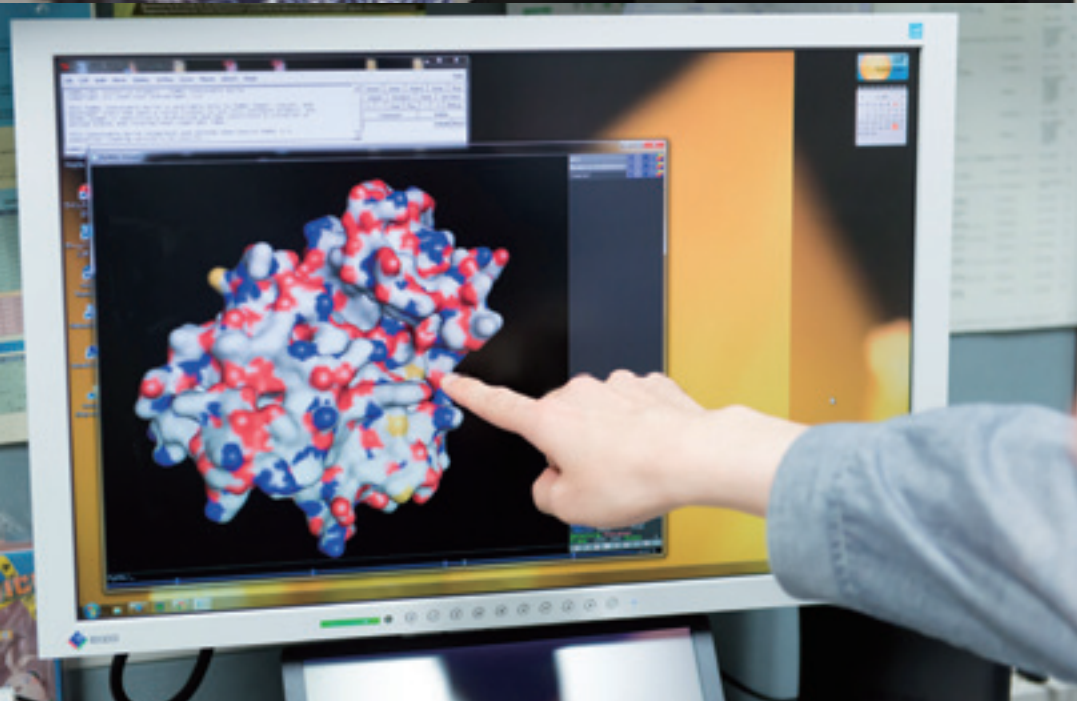
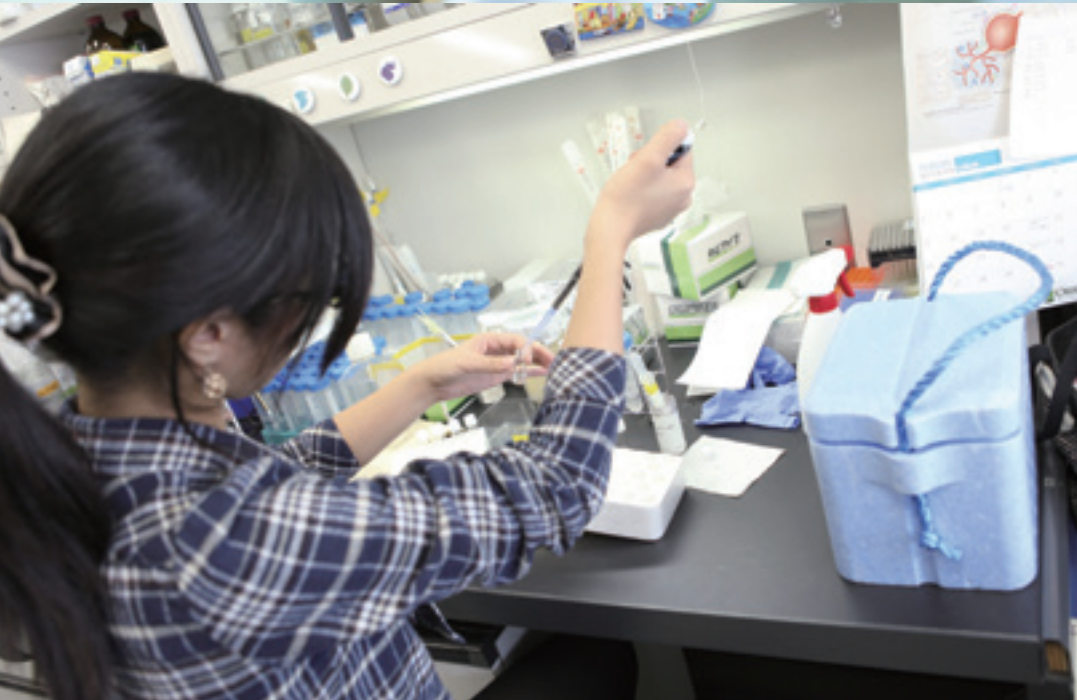




Graduate School of
Biological Sciences

Graduate School of Biological Sciences



CONTENTS

Introduction	02-03
List of Laboratories	04
Departments & Faculty	
■ Department of Plant Biology	
Plant Molecular Genetics	05
Intercellular Communications	06
Plant Cell Function	07
Plant Developmental Signaling	08
Plant Metabolic Regulation	09
Plant Growth Regulation	10
Plant Morphological Dynamics	11
Plant Immunity	12
Plant Developmental Biology	13
■ Department of Biomedical Science	
Molecular Signal Transduction	14
Neuronal Cell Morphogenesis	15
Functional Neuroscience	16
Gene Function in Animals	17
Molecular and Cell Genetics	18
Tumor Cell Biology	19
Molecular Immunobiology	20
■ Department of Systems Biology	
Microbial Molecular Genetics	21
Systems Microbiology	22
Cell Signaling	23
Applied Stress Microbiology	24
Structural Biology	25
Membrane Molecular Biology	26
Biodynamics and Integrative Biology	27
Gene Regulation Research	28
■ Plant Global Educational Project	
Plant Function Analysis	29
■ Affiliate Laboratories	
Molecular Genetics of Human Diseases (with Osaka Medical Center for Cancer and Cardiovascular Diseases)	30
Neuronal Network Formation (with Osaka Bioscience Institute)	31
Tissue Development Dynamics (with the Center for Developmental Biology, RIKEN)	32
Cell Growth Control (with the Center for Developmental Biology, RIKEN)	33
Molecular Microbiology and Genetics (with Research Institute of Innovative Technology for the Earth (RITE))	34
Research Facilities and Equipment	35-36



Introduction

to the Graduate School of

Biological Sciences

Looking at Cells from the Perspective of Molecules

The Graduate School of Biological Sciences undertakes advanced research to elucidate various structures and functions of microorganisms, plants and animals at the molecular and cellular levels, and clarifies principles of the basic phenomena of life and biological diversity.

In the 21st Century COE and the global COE programs, we elucidated the dynamic networks of

molecules that comprise cells, using information science techniques in exhaustive analyses of genome sequences and protein structures. Based on such advanced fundamental research, the Graduate School of Biological Sciences produces research and development that benefits human well-being and trains researchers for active roles in the international community.

Active and high-level faculty and staff

Our dynamic research and education programs are led by internationally active faculty. The Graduate School of Biological Sciences is one of the top institutes in attracting funds such as Grants-in-Aid for scientific research and the COE programs

from the Japan Society for the Promotion of Science and Japanese government ministries, showing that our faculty and staff are of high repute both inside and outside Japan.

Abundant research facilities

Each department is equipped with a variety of state-of-the-art equipment. Furthermore, shared equipment on a par with the most advanced avail-

able for biological science research in Japan is provided at numerous locations within the School.

Graduate school education with a comprehensive curriculum

We provide two graduate courses to meet students' needs for their future careers: a two-year Bio-Expert course, and a five-year Frontier Bio course. We also offer an international masters

course that is taught completely in English and a wide range of lectures covering the diverse fields of biological sciences.

Support for student's research and life

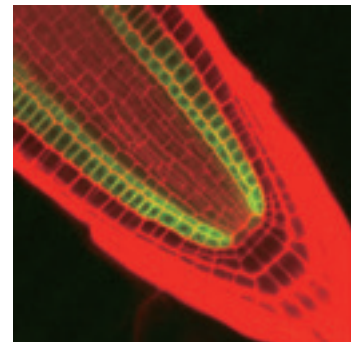
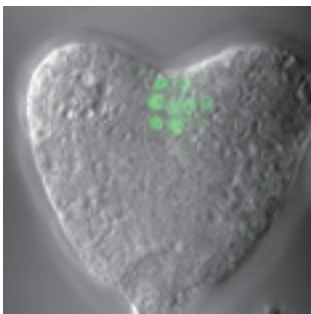
We have a strong support system for students to enable them to engage in research without worrying about basic needs. We offer scholarships from

the Japan Student Services Organization and other public and private entities, and TA and RA funds for distinguished students in the doctoral program.

New graduate university education system

NAIST's efforts to reform graduate university education have been recognized consecutively in programs promoted by MEXT: the Initiatives for Attractive Education in Graduate Schools (2005–2006), the Support Program for Improving Graduate School Education (2007–2009), and the Global Initiatives Program for Promoting Over-

seas Collaborative Research Toward Graduate Education in Biological Science, Nano-science, and Information Technology (2011-2016). With support from these programs, NAIST helps students to develop an autonomous and international outlook as part of a graduate university education that is unparalleled in Japan.



Research and Education Center for Genetic Information

We manage and operate campus-wide joint education and research facilities for radioisotope, animal and plant experiments at the Center. The Radioisotope Facility is responsible for the safety of radioisotopes used throughout NAIST as well as for user training. The Animal Experimentation Facility houses small animals and provides training for users. It also creates various transgenic mice to support research. The Botanical Green-

houses comprise both open and closed greenhouses. This facility houses the individual plants necessary for research activities, including transgenic plants.

These facilities are essential resources in advanced biological sciences. Technicians and other expert staff are employed to make sure the Center operates efficiently.

Graduate School of Biological Sciences

Departments & Faculty

Department of Plant Biology

Laboratory	Professor	Associate Professor	Assistant Professor
Plant Molecular Genetics			Hiroyuki Tsuji, Yoji Kawano, Ken-ichiro Taoka, Izuru Ohki
Intercellular Communications	Seiji Takayama		Yuko Wada, Kohji Murase
Plant Cell Function	Takashi Hashimoto		Takehide Kato, Tsubasa Shoji
Plant Developmental Signaling		Keiji Nakajima	Shunsuke Miyashima
Plant Metabolic Regulation	Taku Demura	Minoru Kubo	Ko Kato, Arata Yoneda
Plant Growth Regulation	Masaaki Umeda		Yoko Okushima, Naoki Takahashi
Plant Morphological Dynamics	Masao Tasaka		Masahiko Furutani, Jun Ito
Plant Immunity		Yusuke Saijoh	
Plant Developmental Biology		Mitsuhiro Aida	

Department of Biomedical Science

Laboratory	Professor	Associate Professor	Assistant Professor
Molecular Signal Transduction	Hiroshi Itoh		Norikazu Mizuno, Tetsuo Kobayashi
Neuronal Cell Morphogenesis		Naoyuki Inagaki	Akihiro Urasaki
Functional Neuroscience	Sadao Shiosaka	Shoji Komai	Hideki Tamura
Gene Function in Animals	Masashi Kawaichi	Yasumasa Ishida	Chio Oka, Eishou matsuda
Molecular and Cell Genetics	Kenji Kohno	Yukio Kimata	Akio Tsuru, Michiko Saito
Tumor Cell Biology	Jun-ya Kato		Noriko Kato
Molecular Immunobiology		Taro Kawai	Takumi Kawasaki

Department of Systems Biology

Laboratory	Professor	Associate Professor	Assistant Professor
Microbial Molecular Genetics	Hisaji Maki	Masahiro Akiyama	Satoko Maki, Asako Furukohri
Systems Microbiology	Hirotsada Mori		
Cell Signaling	Kaz Shiozaki		Hisashi Tatebe, Tomoyuki Fukuda
Applied Stress Microbiology	Hiroshi Takagi		Iwao Ohtsu, Daisuke Watanabe
Structural Biology	Toshio Hakoshima		Ken Kitano, Yoshinori Hirano
Membrane Molecular Biology		Tomoya Tsukazaki	Yoshiki Tanaka
Biodynamics and Integrative Biology	Narutoku Sato (Thomas N. Sato)		Takashi Akanuma, Norio Takada, Kyoji Urayama
Gene Regulation Research	Yasumasa Bessho		Takaaki Matsui, Yasukazu Nakahata

Plant Global Educational Project

Laboratory	Professor	Associate Professor	Assistant Professor
Plant Function Analysis	Masao Tasaka	Noriko Inada, Tetsuya Kurata, Yoichiro Fukao	Masayuki Fujiwara

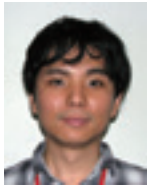
Affiliate Laboratories

Laboratory	Professor	Associate Professor
Molecular Genetics of Human Diseases (with Osaka Medical Center for Cancer and Cardiovascular Diseases)	Kikuya Kato	
Neuronal Network Formation (with Osaka Bioscience Institute)	Kazuo Emoto	
Tissue Development Dynamics (with the Center for Developmental Biology, RIKEN)		Erina Kuranaga
Cell Growth Control (with the Center for Developmental Biology, RIKEN)		Takashi Nishimura
Molecular Microbiology and Genetics (with Research Institute of Innovative Technology for the Earth (RITE))	Hideaki Yukawa	

Laboratory

Plant Molecular Genetics

▶ URL: <http://bsw3.naist.jp/eng/courses/courses101.html>



Assist. Prof.
Hiroyuki Tsuji

E-mail { tsujih, y-kawano, ktaoka, i-ooki }@bs.naist.jp



Assist. Prof.
Yoji Kawano



Assist. Prof.
Ken-ichiro Taoka



Assist. Prof.
Izuru Ohki

Outline of Research and Education

Rice is an important source of food for humans. Recently, its genome has been completely sequenced. Furthermore, gene transfer is easy with rice, and many mutants are available. These features make rice a suitable material for studies of molecular biology. The “Plant Molecular Genetics” laboratory aims to clarify various phenomena of plants at the molecular level, using rice as a subject. It also aims to apply research outcomes for future rice improvement.

The research in this laboratory employs the following techniques: gene isolation by map-based cloning, transformation, RNA interference (RNAi), isolation of interacting proteins by the yeast two-hybrid method and affinity chromatography, and proteomics using mass spectrometry.

Major Research Topics

1. Plant innate immunity

- Roles of small G-protein Rac in plant immunity
- Signal transduction pathways in plant immunity

2. Flowering regulation

- Searching for the flower inducing hormone “florigen”
- Induction of flowering by day length (photoperiod)

3. Rice improvement through genetic engineering

- Disease-resistant rice
- Flowering time modification

4. Plant cell bio-imaging

- FRET biosensor
- In vivo imaging of protein-protein interaction

References

1. Plant immunity

- Akamatsu A. et al., Cell Host Microbe, 13, 465-476, 2013
- Kawano Y., Shimamoto K., Curr. Opin. Plant Biol., 16, 496-504, 2013
- Kawano Y. et al., Cell Host Microbe, 7, 362-375, 2010
- Chen L. et al., Cell Host Microbe, 7, 185-196, 2010
- Nakashima A. et al., Plant Cell, 20, 2265-2279, 2008
- Wong H.L. et al., Plant Cell, 19, 4022-4034, 2007
- Thao N.P. et al., Plant Cell, 19, 4035-4045, 2007

2. Florigen and flowering regulation

- Tsuji H. et al., Plant Cell Physiol. 54:385-397, 2013
- Tsuji H. et al., Curr. Opin. Plant Biol. 16:228-235, 2013
- Tsuji H. et al., Leading Authors 2, e004, 2013
- Taoka K. et al., Trends Plant Sci., 18, 287-294, 2013
- Taoka K. et al., Nature, 476, 332-335, 2011
- Navarro C. et al., Nature 478, 119-122, 2011
- Tamaki S. et al., Science, 316, 1033-1036, 2007
- Hayama R. et al., Nature, 422, 719-722, 2003

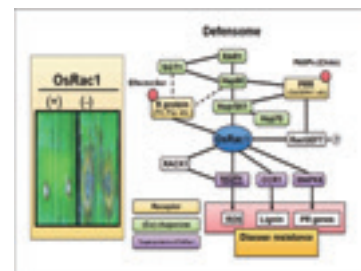


Fig.1 The Defensome complex containing small GTPase OsRac1 plays important roles in rice innate immunity.

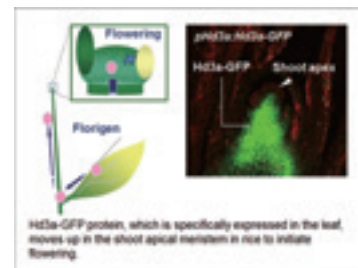


Fig.2 Florigen: the mobile flowering signal

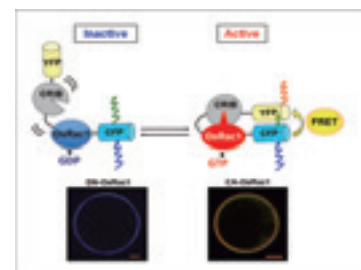


Fig.3 FRET biosensor monitors the activation state of OsRac1, a key rice innate immunity regulator

Laboratory

Intercellular Communications

► URL: <http://bsw3.naist.jp/eng/courses/courses102.html>



Prof.
Seiji Takayama



Assist. Prof.
Yuko Wada



Assist. Prof.
Kohji Murase

E-mail takayama@bs.naist.jp, yu-wada@gtc.naist.jp, kmurase@is.naist.jp

Outline of Research and Education

In plants and animals multicellularity and cell-to-cell communication systems evolved independently, each starting a different unicellular eukaryote, which in turn evolved from a common unicellular eukaryotic ancestor. Therefore, the signaling mechanisms between cells in plants and animals have both similarities and differences. Our overall research interests are in understanding these common and unique communication mechanisms working in plant cells.

Major Research Topics

1. Molecular mechanisms for plant self-incompatibility

- Brassicaceae self-recognition systems (Fig.1)
- Solanaceae nonself-recognition systems (Fig.2)

2. Molecular mechanisms for plant sexual reproduction process.

3. Epigenetic gene regulation mechanisms in plants (Fig.3)

References

1. Iwano et al., *Development*, 139, 4202-4209, 2012
2. Iwano and Takayama, *Curr. Opin. Plant Biol.*, 15, 78-83, 2012
3. Tarutani and Takayama, *Curr. Opin. Plant Biol.*, 14, 608-613, 2011
4. Kubo et al., *Science*, 330, 796-799, 2010
5. Tarutani et al., *Nature*, 466, 983-986, 2010
6. Tsuchimatsu et al., *Nature*, 464, 1342-1346, 2010
7. Kakita et al., *Plant Cell*, 19, 3961-3973, 2007
8. Shimosato et al., *Plant Cell*, 19, 107-117, 2007
9. Shiba et al., *Nature Genet.*, 38, 297-299, 2006
10. Takayama and Isogai, *Annu. Rev. Plant Biol.*, 56, 467-489, 2005
11. Murase et al., *Science*, 303, 1516-1519, 2004
12. Takayama and Sakagami, *Curr. Opin. Plant Biol.*, 5, 382-387, 2002
13. Shiba et al., *Plant Cell*, 14, 491-504, 2002
14. Takayama et al., *Nature*, 413, 534-538, 2001
15. Takayama et al., *Proc. Natl. Acad. Sci. USA*, 97, 3765-3770, 2000
16. Takayama et al., *Proc. Natl. Acad. Sci. USA*, 97, 1920-1925, 2000

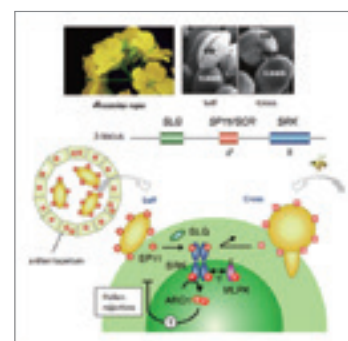


Fig.1 Mechanism for self-incompatibility in the Brassicaceae

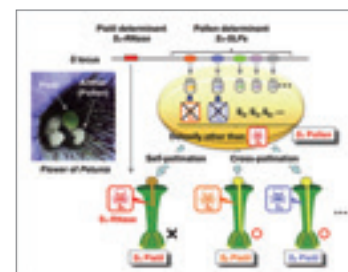


Fig.2 Mechanism for self-incompatibility in the Solanaceae

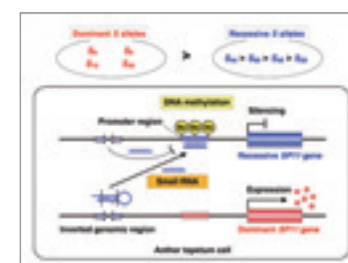


Fig.3 Models for epigenetic control of dominant/recessive relationship



Prof.
Takashi Hashimoto



Assist. Prof.
Takehide Kato



Assist. Prof.
Tsubasa Shoji

E-mail { hasimoto, t-kato, t-shouji }@bs.naist.jp

Outline of Research and Education

We conduct extensive research, from basic to applied, concerning the cellular function, signal transduction and regulation of gene expression in higher-plants, making effective use of molecular genetics and imaging technologies on *Arabidopsis thaliana*, tobacco, and tomatoes.

Major Research Topics

1. Dynamic reorganization of microtubule cytoskeletons in response to environmental stimuli and during plant growth

- Pattern formation of bio-polymer networks
- Regulators of microtubule dynamics
- Left-right asymmetry establishment in cell shape
- Stress-induced reorganization of microtubule arrays

2. Biosynthesis of bio-active natural products

- Enzymes and transporters for nicotine in tobacco
- Herbivory activation of wound-signaling pathways for defense compound biosynthesis
- Novel natural products in crop plants

References

1. Hamada et al., *Plant Physiol.* 2013 (in press)
2. Fujita et al., *Curr. Biol.* 2013 (in press)
3. Nakamura et al., *Plant J.* 71, 216-225, 2012
4. Shoji et al., *Plant Cell*, 22, 3390-3409, 2010
5. Nakamura et al., *Nature Cell Biol.*, 12, 1064-1070, 2010
6. Komaki et al., *J. Cell Sci.*, 123, 451-459, 2010
7. Nakamura and Hashimoto, *J. Cell Sci.*, 122, 2208-2217, 2009
8. Shoji et al., *Plant Physiol.*, 149, 708-718, 2009
9. Yao et al., *J. Cell Sci.*, 121, 2372-2381, 2008
10. Ishida et al., *Proc.Natl.Acad.Sci.USA*, 104, 8544-8549, 2007
11. Nakajima et al., *Plant Cell*, 16, 1178-1190, 2004
12. Naoi and Hashimoto, *Plant Cell*, 16, 1841-1853, 2004
13. Thitamadee et al., *Nature*, 417, 193-196, 2002

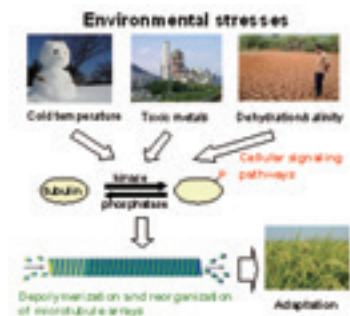


Fig.1 Environmental stresses remodel the microtubule cytoskeleton by phosphorylation of tubulin subunits.



Fig.2 The plant microtubule cytoskeleton remodels in response to developmental and environmental signals, and controls plant cell shape.

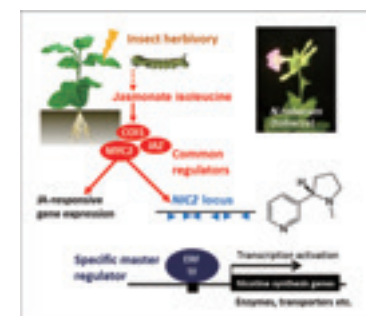


Fig.3 Jasmonate-responsive ERF transcription factor genes clustered at NIC2 locus regulate nicotine biosynthesis in tobacco.

Laboratory

Plant Developmental Signaling

► URL: <http://bsw3.naist.jp/eng/courses/courses110.html>



Assoc. Prof.
Keiji Nakajima



Assist. Prof.
Shunsuke Miyashima

E-mail { k-nakaji, s-miyash }@bs.naist.jp

Outline of Research and Education

Microscopic observation of plant sections allows one to realize the beautiful patterns of cells, each with a different shape and size (Fig.1). These cells are not only diverse in appearance, but are functionally specialized to play specific roles in each organ. These tissue patterns are produced from a single cell, the zygote. One of the most fundamental questions in plant developmental biology is how complex plant structures are derived from a single cell.

Our research group is trying to identify basic principles of plant development using model plant species. We aim to understand the intercellular signal transduction pathways underlying the pattern formation of roots and embryos, as well as cell reprogramming that triggers embryogenesis.

Major Research Topics

1. Cell-cell communication in tissue patterning

Due to the presence of rigid cell walls, plant cells are generally unable to alter their direction or position in the organ primordia. Therefore, timing and orientation of cell divisions, as well as cell fates, are determined by interpreting the positional cues of surrounding cells. Such developmental mechanisms rely on the presence of intimate cell-cell communication pathways. Our recent studies revealed the presence of novel signaling pathways that allow regulatory molecules such as transcription factors and microRNAs to traffic from cell to cell (Fig.2). We are currently focusing on the molecular mechanisms that allow microRNAs to move cell to cell, as well as the evolution of such pathways.

2. Cell reprogramming and pattern formation during embryogenesis

Embryogenesis of the Brassica family, including the model plant *Arabidopsis*, proceeds in a highly coordinated manner (Fig.3). Similar to innovation of iPS cells, activation of an embryo-specific developmental program is initiated only after the reprogramming of somatic cells into the embryonic status. We have recently discovered a key reprogramming factor in *Arabidopsis*, and are currently pursuing its mechanism of action. We are also constructing a translational approach that utilizes this reprogramming factor to propagate useful plant lines without waiting for the transition to the reproductive growth phase.

References

1. Nakajima et al., *Nature*, 413, 307-311, 2001
2. Nakajima et al., *Plant Cell*, 16, 1178-1190, 2004
3. Sarkar et al., *Nature*, 446, 811-814, 2007
4. Miyashima et al., *Plant Cell Physiol.*, 50, 626-634, 2009
5. Miyashima et al., *Development*, 138, 2303-2313, 2011
6. Waki et al., *Curr. Biol.*, 21, 1277-1281, 2011
7. Waki et al. *Plant J.*, 73, 357-367, 2013
8. Miyashima et al., *Plant Cell Physiol.*, 54, 375-384, 2013

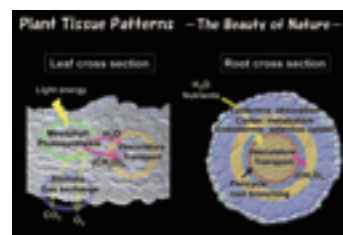


Fig.1 (Left) In leaves, specialized cell types such as mesophyll, stomata, and vascular cells, are spatially arranged to maximize photosynthetic ability. (Right) Root tissues are organized into a concentric pattern that facilitates water and nutrient uptake, as well as their metabolism and translocation.

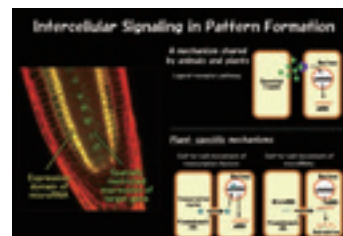


Fig.2 Plant cells are connected with a cytoplasmic continuum termed the plasmodesmata (PD). PD allows passage of regulatory molecules, such as transcription factors and small RNAs, thereby serving as a channel to transmit developmental signals.



Fig.3 Pattern formation in embryogenesis is triggered by cell reprogramming and proceeds in a highly ordered manner. We are studying the mechanisms underlying embryonic pattern formation and reprogramming, as well as application of the reprogramming factor for efficient propagation of useful plants.

Laboratory

Plant Metabolic Regulation

▶ URL: <http://bsw3.naist.jp/eng/courses/courses104.html>



Prof.
Taku Demura



Assoc. Prof.
Minoru Kubo



Assist. Prof.
Ko Kato



Assist. Prof.
Arata Yoneda

E-mail { demura, ku-bo, kou, arata-yoneda }@bs.naist.jp

Outline of Research and Education

Our laboratory engages in research and education pertaining to the biotechnology needed to resolve the issues facing human beings in the 21st century, such as food, the environment, and energy. Using molecular biology methods based on genomic information, we are clarifying the mechanisms for gene expression regulation in plants and molecular breeding of stress-resistant plants and trees making use of biological functions.

Major Research Topics

1. Analysis of molecular mechanisms governing xylem cell differentiation
2. Molecular and cell biological approaches to trees
3. Highly-efficient transgene expression systems of higher plants

References

1. Matsuura H. et al., *Plant Cell Physiol.*, 54, 474-483, 2013
2. Ueda K. et al., *Plant Cell Physiol.*, 53, 1481-1491, 2012
3. Matsui T. et al., *Transgenic Res.*, 20, 735-748, 2011
4. Ohtani M. et al., *Plant J.*, 67, 499-512, 2011
5. Yamaguchi M. et al., *Plant J.*, 66, 579-590, 2011
6. Matsui T. et al., *Plant Cell Physiol.*, 52, 413-420, 2011
7. Matsuura H. et al., *Plant Cell Physiol.*, 51, 448-462, 2010
8. Nagaya S. et al., *Plant Cell Physiol.*, 51, 328-332, 2010
9. Matsuura H. et al., *Biosci. Biotechnol. Biochem.*, 74, 2210-2212, 2010
10. Sugio T. et al., *J. Biosci. Bioeng.*, 109, 170-173, 2010
11. Demura T. and Ye ZH., *Curr. Opin. Plant Biol.*, 13, 299-304, 2010
12. Yamaguchi M. et al., *Plant Cell*, 22, 1249-1263, 2010
13. Yamaguchi M. et al., *Plant Physiol.*, 153, 906-914, 2010
14. Nakano Y. et al., *Plant Biotechnol.*, 27, 267-272, 2010
15. Yamaguchi M. and Demura T., *Plant Biotechnol.*, 27, 237-242, 2010
16. Matsui T. et al., *Biosci. Biotechnol. Biochem.*, 73, 1628-1634, 2009
17. Endo S. et al., *Plant Cell*, 21, 1155-1165, 2009
18. Ichikawa K. et al., *Plant Cell Physiol.*, 49, 214-225, 2005
19. Kubo M. et al., *Genes Dev.*, 19, 1855-1860, 2005

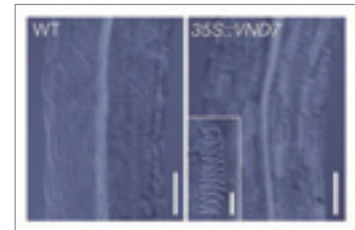


Fig.1 VND7 acts as a key regulator of the xylem vessel differentiation. Overexpression of VND7 induces transdifferentiation of epidermal cells into xylem vessel elements with spiral structure of secondary wall thickening (arrows) in hypocotyle. Bar=100 μ m.

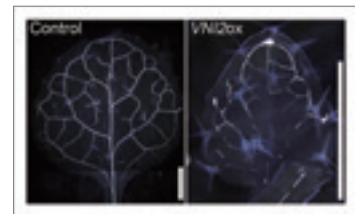


Fig.2 VNI2 is a negative regulator of the xylem vessel differentiation. VNI2 has been isolated as an interacting protein with VND7. The discontinuous structure of xylem vessels is observed in VNI2 overexpression line. Bar = 1 mm.



Fig.3 Molecular breeding for obtaining trees with useful traits

Laboratory

Plant Growth Regulation

► URL: <http://bsw3.naist.jp/eng/courses/courses105.html>



Prof.
Masaaki Umeda



Assist. Prof.
Yoko Okushima



Assist. Prof.
Naoki Takahashi

E-mail { mumeda, okushima, naoki }@bs.naist.jp

Outline of Research and Education

Because plant cells are surrounded by a rigid cell wall, they cannot - unlike animal cells - move within organs. Therefore, plants control cell division in a precise, spatiotemporal manner to achieve proper development of organs. However, little is known about how the cell cycle is regulated during morphogenesis and under various environmental conditions. We focus on the molecular mechanisms underlying cell cycle control in response to internal and external signals, such as phytohormones and environmental stresses. Our studies will broaden the understanding of plant survival strategies, and provide insights for molecular breeding to yield an increase of plant biomass.

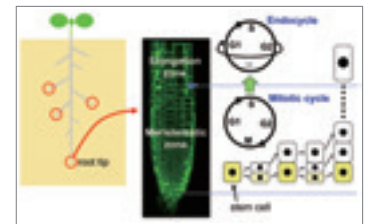


Fig.1 Cell cycle regulation in root growth

Major Research Topics

1. Cell cycle regulation in root growth (Fig.1)

- Hormonal control of the transition from cell division to cell growth
- Cell cycle time-lapse imaging in different cell types

2. Developing technologies for plant productivity improvement by inducing DNA polyploidization (Fig.2)

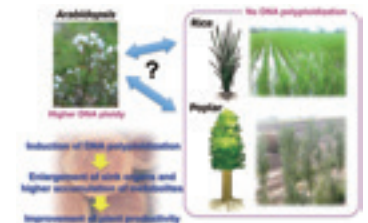


Fig.2 Development of high-biomass plants by induction of DNA polyploidization

3. DNA damage signaling

- DNA damage signaling mediated by transcription factor SOG1
- Crosstalk between DNA damage response and hormone signaling

4. Organ size control through cytokinin biosynthesis adjustment in the vasculature (Fig.3)

References

1. Takahashi N. et al., *Curr. Biol.*, 23, 1812-1817, 2013
2. Yoshiyama K.O. et al., *EMBO Rep.*, 14, 817-822, 2013
3. Nobusawa T. et al., *PLoS Biol.*, 11(4): e1001531, 2013
4. Nobusawa T. and Umeda M., *Genes Cells*, 17, 709-719, 2012
5. Endo M. et al., *Plant J.*, 69, 967-977, 2012
6. Adachi S. et al., *Proc. Natl. Acad. Sci. USA*, 108, 10004-10009, 2011
7. Inagaki S. and Umeda M., *Int. Rev. Cell Mol. Biol.*, 291, 227-261, 2011
8. Adachi S. et al., *Dev. Biol.*, 329, 306-314, 2009
9. Takatsuka H. et al., *Plant J.*, 59, 475-487, 2009
10. Kono A. et al., *Plant Cell*, 19, 1265-1277, 2007

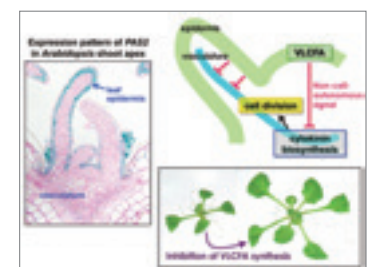


Fig.3 Epidermis-derived signals control organ size. VLCFA, very-long-chain fatty acids; PAS2, *PASTICCINO2*

Laboratory

Plant Morphological Dynamics

▶ URL: <http://bsw3.naist.jp/eng/courses/courses105.html>



Prof.
Masao Tasaka



Assist. Prof.
Masahiko Furutani



Assist. Prof.
Jun Ito

E-mail { m-tasaka, ma-furut, junito }@bs.naist.jp

Outline of Research and Education

During embryogenesis in higher plants, special tissues called the shoot and root meristems are formed at the upper and lower ends, respectively. After germination, the shoot meristem forms above-ground organs such as leaves, stems and floral organs, while the root meristem produces underground roots. Both genetic controls and diverse external environmental factors such as light or gravity influence the formation of the plant body. By using *Arabidopsis thaliana*, a model crucifer plant suitable for molecular genetic analysis, we study the molecular mechanisms that regulate plant development.

Major Research Topics

1. Polar auxin transport mechanisms
2. Molecular mechanisms for auxin-dependent gene transcription

References

1. Uchida N. et al., *Plant Cell Physiol.*, 53, 343-51, 2013
2. Uchida N. et al., *Proc Natl Acad Sci USA*, 109, 6337-42, 2012
3. Furutani M. et al., *Development*, 138, 2069-78, 2011
4. Chung K. et al., *Plant Cell Physiol.*, 52, 1657-64, 2011
5. Uchida N. et al., *Plant Cell Physiol.*, 52, 804-14, 2011
6. Uchida N. et al., *Plant Cell Physiol.*, 52, 716-22, 2011
7. Toyota M. et al., *Plant J.*, 65, 589-599, 2011
8. Ito J. et al., *Plant Cell Physiol.*, 52, 539-52, 2011
9. Kato T. et al., *Plant Cell Physiol.*, 51, 333-8, 2010
10. Ikeyama Y. et al., *Plant J.*, 62, 865-75, 2010

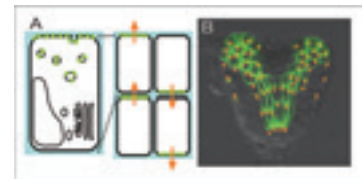


Fig.1 (A) Auxin efflux carriers (green) are localized in the plasma membrane with polarity and auxin is transported to a neighboring cell (orange arrow). (B) Localization of GFP-tagged auxin efflux carrier (green) and presumptive auxin flows (orange arrows) in *Arabidopsis* embryo

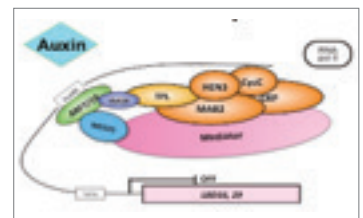


Fig.2 A schematic diagram of auxin-dependent transcription: The transcription factor AUXIN RESPONSE FACTOR (ARF) binds to an auxin-responsive element AuxRE in the promoter region of target genes. A mediator complex transmits information from the ARF to RNA polymerase II.

Laboratory

Plant Immunity

► URL: <http://bsw3.naist.jp/eng/courses/courses111.html>



Assoc. Prof.
Yusuke Saijo
E-mail saijo@bs.naist.jp

Outline of Research and Education

In nature, plants cope with a wide range of microbes that reside on the surface of or within plant tissues. Plants disregard or tolerate the presence of these plant-inhabiting microbes at non-damaging levels, despite an elaborate innate immune system to detect and repel microbes. We hypothesize that plant immunity senses and reacts to “danger” signals (DAMPs) generated upon pathogen challenges over the background microbial signals (MAMPs). We aim to decipher the molecular principles and mechanisms underlying this sophisticated function of plant immunity, with major focuses on immune sensors and signaling, defense-related transcriptional reprogramming, and microbial strategies to avoid/dampen host immune activation. We believe that our studies will give important insight into general principles of plant immunity, and thus offer new effective approaches for controlling plant health and growth in sustainable agriculture.

Major Research Topics

1. Pattern-triggered immunity upon sensing microbial or danger signals
2. Cell-to-cell communication in plant immunity
3. Transcriptional reprogramming in plant immunity
4. Pathogen recognition in plant-microbe interactions
5. Signal integration between biotic and abiotic stress responses

References

1. Ross et al., EMBO J., 2013 in press
2. Tintor et al., Proc Natl Acad Sci U.S.A., 110, 6211-6216, 2013
3. Serrano et al., Plant Physiol., 158, 408-422, 2012
4. Saijo, Cell Microbiol., 12, 716-724, 2010
5. Lu et al., Proc Natl Acad Sci USA, 106, 22522-22527, 2009
6. Saijo et al., EMBO J., 28, 3439-3449, 2009
7. Saijo et al., Molecular Cell, 31, 607-613, 2008
8. Shen et al., Science, 315, 1098-1103, 2007

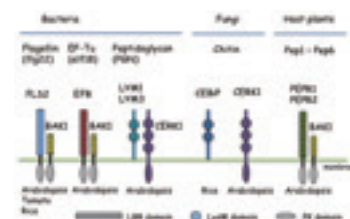


Fig.1 Pattern recognition receptors and co-receptors in plants

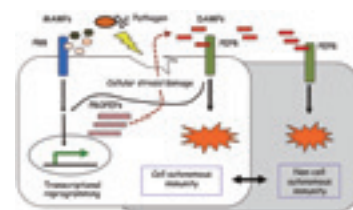


Fig.2 Layered MAMP- and DAMP-receptor signaling confers robustness to plant immunity.

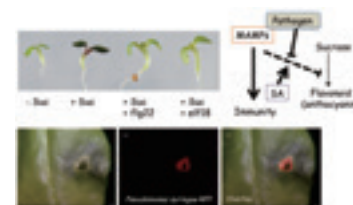


Fig.3 Repression of anthocyanin accumulation (pigmentation) upon pattern recognition (Top) and anthocyanin de-repression upon bacterial infection (Bottom): Anthocyanin de-repression by adapted pathogens is counteracted by salicylate (SA)-based immunity.



Assoc. Prof.
Mitsuhiro Aida

E-mail m-aida@bs.naist.jp

Outline of Research and Education

Why can plants continuously grow upwards throughout their lifetime? How do plant organs such as leaves and floral organs acquire the diverse shapes that we see around us? To answer these questions, we focus on a small tissue called the shoot meristem, which is located at the tip of the stem (Fig.1). The shoot meristem contains a group of undifferentiated cells in its center. These cells proliferate to produce differentiated organs while they renew themselves to maintain their entity. Cells in the meristem thus possess characteristics of “stem cells”, a common strategy for generating complex structures in multicellular organisms. The self-maintaining ability of the meristem is remarkable: in some species, its activity can last for more than a thousand years to produce a tall tree that reaches 100 meters in height. The activity of the shoot meristem is modified upon developmental and environmental cues so that it can produce appropriate types of organs with different shapes. The aim of our research is to understand molecular and cellular mechanisms that control the activity of this fascinating tissue, using the model plant *Arabidopsis thaliana*.

Major Research Topics

1. Shoot meristem establishment during embryogenesis
2. Flower development and meristem activity
3. Specification and morphogenesis of carpels

References

1. Nahar MAU et al., *Plant Cell Physiol*, 53, 1134-1143, 2012
2. Takeda S. et al., *Plant J*, 66, 1066-1077, 2011
3. Takeda S. and Aida M., *J Plant Res*, 124, 211-219, 2011
4. Takano S. et al., *Plant Cell Physiol*, 51, 621-634, 2010
5. Karim M. et al., *Plant Cell*, 21, 1360-1372, 2009
6. Aida M. and Tasaka M., *Curr Opin Plant Biol*, 9, 72-77, 2006
7. Aida M. and Tasaka M., *Plant Mol Biol*, 60, 915-928, 2006
8. Furutani M. et al., *Development*, 131, 5021-5030, 2004
9. Aida M. et al., *Cell*, 119, 109-120, 2004
10. Aida M. et al., *Development*, 129, 3965-3974, 2002
11. Aida M. et al., *Development*, 126, 1563-1570, 1999
12. Aida M. et al., *Plant Cell*, 9, 841-857, 1997

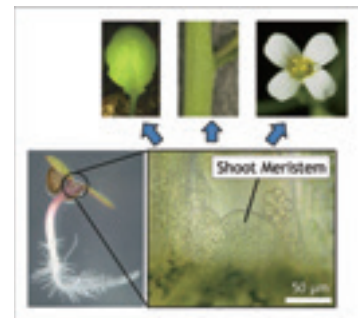


Fig.1 Shoot meristem is the source of most aerial organs, such as leaves, stems and flowers.

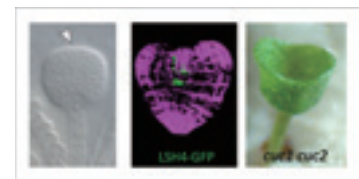


Fig.2 Left: *Arabidopsis* embryo at the globular stage: The arrowhead indicates the site of shoot meristem formation. Center: Localization of a protein (green) encoded by one of the CUC1 and CUC2 downstream genes in the heat stage embryo. Right: A mutant that lacks both CUC1 and CUC2 activity: Cotyledons are fused and no shoot meristem is formed.

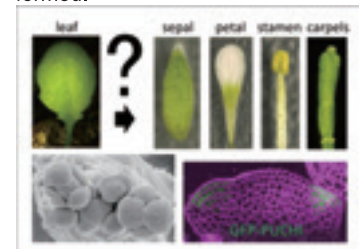


Fig.3 Top: Although homeotic genes are known to convert a leaf into any of the floral organs, how they do this is still largely unknown. Bottom left: The shoot meristem (central dome) produces floral meristems. Bottom right: PUCHI protein (green) marks two early flower primordia successively produced from the shoot meristem.

Laboratory

Molecular Signal Transduction

► URL: <http://bsw3.naist.jp/eng/courses/courses202.html>



Prof.
Hiroshi Itoh



Assist. Prof.
Norikazu Mizuno



Assist. Prof.
Tetsuo Kobayashi

E-mail { hitoh, nmizuno, kobayt }@bs.naist.jp

Outline of Research and Education

Signal transduction is indispensable for organ development and homeostasis. Hormones and neurotransmitters induce a variety of cell responses mediated through membrane receptors and intracellular signaling pathways. Impairment of the signal transduction often causes disease. Many drugs targeted at the signal components are widely used today. Our laboratory is interested in cellular signaling systems with special emphasis on heterotrimeric G proteins. In our laboratory, faculty and graduate students are dedicated to cutting-edge scientific research and work towards a better understanding of how the human body functions and the alleviation of human disease.

Major Research Topics

1. Cellular functions and regulatory mechanisms of G protein signaling
2. Molecular mechanisms of self-renewal, differentiation, and migration of neural stem cells
3. Monoclonal antibodies against orphan adhesion GPCRs involved in tumorigenesis and neural function
4. Molecular and cellular mechanisms regulating formation of primary cilia in mammalian cells

References

1. Jenie RI. et al., *Genes Cells*, 18, 1095, 2013
2. Toriyama M. et al., *J. Biol. Chem.*, 287, 12691, 2012
3. Kobayashi T. et al., *Cell*, 145, 914, 2011
4. Kobayashi T. et al., *J. Cell Biol.*, 193, 435, 2011
5. Nishimura A. et al., *Proc. Natl. Acad. Sci. USA*, 107, 13666, 2010
6. Tago K. et al., *J. Biol. Chem.*, 285, 30622, 2010
7. Nagai Y. et al., *J. Biol. Chem.*, 285, 11114, 2010
8. Nakata A. et al., *EMBO Rep.*, 10, 622, 2009
9. Mizuno N. & Itoh H., *Neurosignals*, 17, 42, 2009
10. Iguchi T. et al., *J. Biol. Chem.*, 283, 14469, 2008
11. Urano D et al., *Cell Signal.*, 20, 1545, 2008
12. Sugawara et al., *Cell Signal.*, 19, 1301, 2007
13. Nishimura A. et al., *Genes Cells*, 11, 487, 2006
14. Mizuno N. et al., *Proc. Natl. Acad. Sci. USA*, 102, 12365, 2005



Fig.1 Signal transduction mediated by G protein-coupled receptor

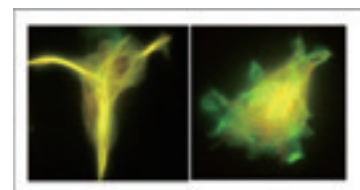


Fig.2 G protein/PKA signal-regulated dynamics of cytoskeleton in neuronal progenitor cells

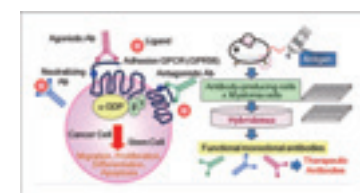


Fig.3 Monoclonal antibody against orphan GPCR as a tool for signal analysis

Laboratory

Neuronal Cell Morphogenesis

► URL: <http://bsw3.naist.jp/eng/courses/courses204.html>



Assoc. Prof.
Naoyuki Inagaki



Assist. Prof.
Akihiro Urasaki

E-mail { ninagaki, aurasaki }@bs.naist.jp

Outline of Research and Education

During morphogenesis, biological systems self-organize their simple shapes into more complicated and beautiful ones. The goal of our studies is to understand deeply this miraculous phenomenon of cellular morphogenesis. There are fundamental questions to be answered. Symmetry breaking (change of a symmetric shape to an asymmetric one) is an essential process of morphogenesis: theoretical models suggest that feedback loops and lateral inhibition may be involved in it, but how do cellular molecules indeed give rise to these processes? Generation of mechanical forces is required to create cellular shape, but how? How do cells sense cellular length and size in order to regulate their size and morphology? Transport and diffusion of intracellular molecules would create unhomogeneous distribution: Do they play a role in cellular pattern formation? Is stochasticity utilized in cellular morphogenesis? All these questions are fascinating for us.

To untangle these issues, our laboratory focuses on neuronal morphogenesis and the proteins Shootin1, Shootin2 and Singar1, which we identified via proteome analyses. We analyze the molecular mechanisms for neuronal polarization, axon/dendrite formation and cell migration, using up-to-date methods including systems biology. We expect that these analyses will give us a new window into therapeutic strategies for neuronal diseases, such as nerve injury.

Major Research Topics

1. Axon/dendrite formation, neuronal polarization and migration
2. Generation of mechanical forces for neurite outgrowth and migration
3. Sensing of cellular length and size
4. Symmetry breaking
5. Tissue morphogenesis by molecular clutch

References

1. Toriyama M. et al., *Curr. Biol.*, 23,529-534, 2013
2. Nakazawa H. et al., *J. Neurosci.*, 32, 12712-12725, 2012
3. Inagaki N. et al., *Dev. Neurobiol.*, 71, 584-593, 2011
4. Toriyama M. et al., *Mol. Syst. Biol.*, 6, 394, 2010
5. Shimada T. et al., *J. Cell Biol.*, 181, 817-829, 2008
6. Urasaki A. et al., *PNAS*, 105, 19827-19832, 2008
7. Mori T. et al., *J. Biol. Chem.*, 282, 19884-19893, 2007
8. Toriyama M. et al., *J. Cell Biol.*, 175, 147-157, 2006
9. Urasaki A. et al., *Genetics*, 174, 639-649, 2006
10. Nomura E. et al., *J. Mass Spectrometry*, 39, 666-672, 2004
11. Oguri T. et al., *Proteomics*, 2, 666-672, 2002
12. Fukata Y. et al., *Nature Cell Biol.*, 4, 583-591, 2002
13. Inagaki N. et al., *Nature Neurosci.*, 4, 872-873, 2001

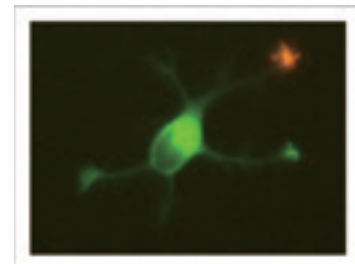


Fig.1 Shootin1 is a key molecule involved in neuronal symmetry breaking

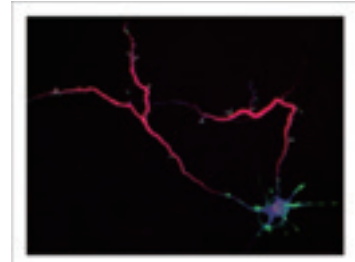


Fig.2 Singar knockdown leads to formation of surplus axons

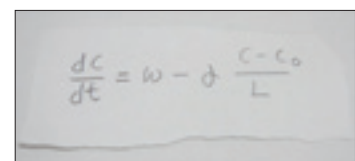


Fig.3 An equation to describe neurite length sensing by shootin1

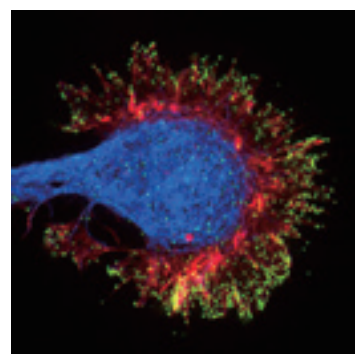


Fig.4 Signal-force transduction through shootin phosphorylation at growth cones

Laboratory

Functional Neuroscience

► URL: <http://bsw3.naist.jp/eng/courses/courses205.html>



Prof.
Sadao Shiosaka



Assoc. Prof.
Shoji Komai



Assist. Prof.
Hideki Tamura

E-mail { sshiosak, skomai, h-tamura }@bs.naist.jp

Outline of Research and Education

1. Our current research and education are focused on the neural functions of the hippocampus, amygdala, and prefrontal cortex using techniques of neuro-anatomy, electrophysiology, biochemistry and behavioral neuroscience.

Major topics are:

- the mechanisms of structural plasticity in the neuronal circuits for memory and learning
- a mechanism for signal transduction in the limbic system
- a mechanism for synaptic tagging through molecular based studies of synaptic potentiation and efficiency control

2. To study the neural activity and the neuronal plasticity observed during animal behaviors depending on its experiences, it is necessary to perform multi-faceted research covering extensive fields, ranging from molecules to behaviors. At our laboratory, we are attempting to achieve this goal by taking single-cell recordings from the brains of behaving animals, making use of patch clamping *in vivo*.

Major Research Topics

The synaptic contacts are composed of cell adhesion and extracellular matrix molecules (CAMs and ECMs) which are sensitive to intracellular and extracellular signaling. It has been unveiled that proteases cleave CAMs and ECMs and the cleaving process might regulate the synaptic potentiation relating cortical and limbic brain functions. In our laboratory, several novel secretory-type serine proteases were cloned and we have analyzed their functions in detail. To date, we have demonstrated that neuropsin (also referred to as klk8) plays a significant role in the regulation of the early phase of long-term potentiation (E-LTP), and regulates intracellular signals of the limbic brain.

However, there are many unresolved questions over how this protease affects the signals from outside into inside of the cells and how it regulates the synaptic function via proteolysis processing. Moreover, it is unknown what roles this mechanism plays in acquisition and/or retention of memories. Our research is currently in progress to resolve these questions concerning the molecular mechanisms of behavioral memory.

References

1. Tamura H. et al., *Rev Neurosci.*, 24(4), 365-74, 2013
2. Tamura H. et al., *J Neurosci.*, 32(37), 12657-72, 2012
3. Kobayashi T. et al., *Biosens Bioelectron.*, 38(1), 321-30, 2012
4. Shingaki K. et al., *J Dermatol Sci.*, 67(1), 71-3, 2012
5. Nakajima A. et al., *Opt Express.*, 20(6), 6097-108, 2012
6. Shiosaka S. and Ishikawa Y., *J Chem Neuroanat.*, 42(1), 24-9, 2011
7. Ishikawa Y. et al., *J Physiol.*, 589(Pt 14), 3559-73, 2011
8. Attwood BK. et al., *Nature*, 473(7347), 372-5, 2011

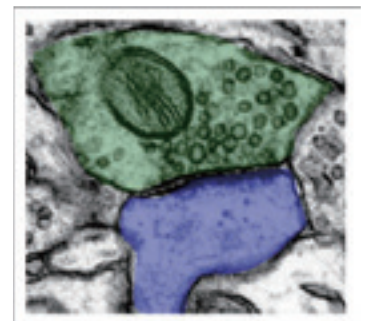


Fig.1 Electron microscopic profile of a synapse in the hippocampal pyramidal layer: The presynapse is colored green and the postsynapse is blue.

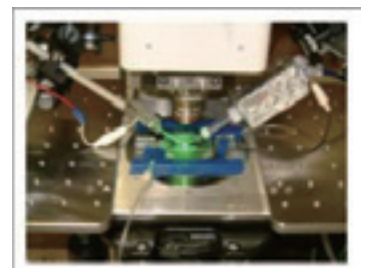


Fig.2 Electrophysiological analysis of synaptic functions: Electrodes are inserted into a hippocampal slice and membrane currents or potentials are recorded.



Fig.3 Behavioral analysis of memory and learning: Animals (mice) are given various learning tasks and the course of their learning is observed in detail.

Laboratory

Gene Function in Animals

▶ URL: <http://bsw3.naist.jp/eng/courses/courses206.html>



Prof.
Masashi Kawaichi



Assoc. Prof.
Yasumasa Ishida



Assist. Prof.
Chio Oka



Assist. Prof.
Eishou Matsuda

E-mail { mkawaich, ishiday, coka, ematsuda }@bs.naist.jp

Outline of Research and Education

Many human diseases are caused by disturbances in gene function and expression. Understanding of gene function and the mode of regulation is important in developing new cures for diseases. We identify and analyze genes involved in the onset of human diseases, and are especially interested in diseases closely related to human aging processes.

Furthermore, in view of the post-genomic age, we develop new techniques that enable rapid and systematical analysis of animal gene function. To this end, we are constructing an ES cell library in which one of every mouse gene is disrupted in each ES cell clone by randomized insertion of retrovirus or transposon DNA. We conduct research on one particular gene isolated by this technique. This gene encodes a novel methyl DNA binding protein and involved in epigenetic control of various aspects of human development by regulating cell death, proliferation, and differentiation.

Major Research Topics

1. Research on genes of the HtrA serine protease family which are involved in the onset of osteoarthritis, age-related macular degeneration, familiar brain infarction, preeclampsia and tumorigenesis (Fig.1)
2. Analysis of Atcay family proteins, Atcay and BNIP-2, which bridges between kinesin-1 and its vesicular cargos such as mitochondria and are involved in intracellular trafficking. Deficiency of Atcay causes the human hereditary disease called Cayman type cerebellar ataxia.
3. Development and application of the gene trap technique which enables efficient, random, and conditional disruption of every mouse gene in ES cells by using unique features of transposons (Fig.2)
4. Functional analysis of a methylated DNA binding transcription factor, CIBZ, with regard to the regulation of cell differentiation, proliferation, programmed cell death and carcinogenesis (Fig.3)

References

1. Supanji, Shimomachi M., Hasan MZ., Kawaichi M., and Oka C., *Exp. Eye Res.*, 112, 79-92, 2013
2. Shigeoka T., Kato S., Kawaichi M., and Ishida Y., *Nucleic Acids Res.*, 40, 6887-6897, 2012
3. Mayasari NI., Mukougawa K., Shigeoka T., Kawakami K., Kawaichi M., and Ishida Y., *Nucleic Acids Res.*, 40, e97, 2012
4. Nishii T., Oikawa Y., Ishida Y., Kawaichi M., and Matsuda E., *J. Biol. Chem.*, 287, 12417-12424, 2012
5. Oikawa Y., Omori R., Nishii T., Ishida Y., Kawaichi M., and Matsuda E., *Cell Res.*, 21, 1578-1590, 2011
6. Aoyama T., Hata S., Nakao T., Tanigawa Y., Oka C., and Kawaichi M., *J. Cell. Sci.*, 122, 4177-4185, 2009
7. Shiroshima T., Oka C., and Kawaichi M., *FEBS Lett.*, 583, 43-48, 2009

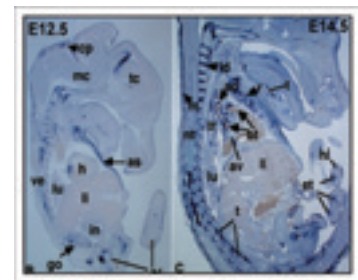


Fig.1 HtrA1 gene involved in the onset of arthritis is primarily expressed in the skeletal system of mouse fetuses and regulates the differentiation of cells in cartilage and bone.

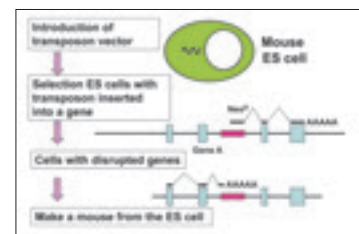


Fig.2 Gene trap technique: Every gene in the mouse ES cell is randomly disrupted by insertion of transposon DNA. The phenotype of the mouse produced from the ES cell will be analyzed to reveal the function of the gene.

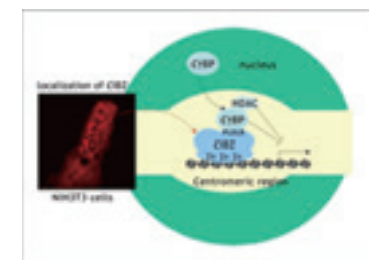


Fig.3 CIBZ suppresses transcription by recruiting CtBP (a transcription suppression cofactor used commonly for various transcription suppressing mechanisms) and histone deacetylase to the heterochromatic area of the centromere.

Laboratory

Molecular and Cell Genetics

► URL: <http://bsw3.naist.jp/eng/courses/courses207.html>



Prof.
Kenji Kohno



Assoc. Prof.
Yukio Kimata



Assist. Prof.
Akio Tsuru



Assist. Prof.
Michiko Saito

E-mail { kkouno, kimata, m-saitou }@bs.naist.jp , atsuru@gtc.naist.jp

Outline of Research and Education

The endoplasmic reticulum (ER) is an important organelle in which newly synthesized secretory and membrane proteins are correctly folded and assembled. We are conducting the following studies: the signal transduction pathways (UPR: unfolded protein response) from the ER to the cytosol/nucleus, the quality control of protein folding in the ER, and the physiological roles of UPR at the molecular, cellular, and individual animal levels. We are also interested in the study of diseases caused by UPR dysfunction.

In our other work, we have developed a simple and highly sensitive method for conditional cell ablation in transgenic mice, called “toxin receptor-mediated cell knockout (TRECK)”. We have created mouse models of hepatitis and diabetes mellitus and are conducting studies on regenerative medicine by using these TRECK-Tg mice.

Major Research Topics

1. ER quality control and Unfolded Protein Response (UPR)

- ER stress-sensing mechanism by IRE1
- Molecular analysis of unconventional splicing in mammals
- Physiological functions of IRE1 α and IRE1 β using KO mice
- Analysis of a novel ER chaperon molecule DNAJB12

2. Regenerative medicine using TRECK-Tg mice

References

1. Tsuru A. et al., Proc Natl Acad Sci USA, 110, 2864-2869, 2013
2. Ishiwata-Kimata Y. et al., Genes Cell, in press, 2013
3. Jinde S. et al., Neuron, 76, 1189-1200, 2012
4. Promlek T. et al., Mol. Biol. Cell, 22, 3520-3532, 2011
5. Shinya S. et al., Nucleic Acids Res., 39, 5245-5254, 2011
6. Yanagitani K. et al., Science, 331, 586-589, 2011
7. Kimata Y. and Kohno K., Curr. Opin. Cell Biol., 23, 135-142, 2011
8. Nakamura D. et al., FEBS Lett., 585, 133-138, 2011
9. Yamamoto Y.H. et al., Cell Struct. Funct., 35, 107-116, 2010
10. Thorel F. et al., Nature, 464, 1149-1154, 2010
11. Kohno K., J. Biochem., 147, 27-33, 2010
12. Abematsu M. et al., J. Clin. Inv., 120, 3255-3266, 2010
13. Iwawaki T. et al., Proc Natl Acad Sci USA, 106, 16657-16662, 2009
14. Yanagitani K. et al., Mol. Cell, 34, 191-200, 2009
15. Takeuchi M. et al., Mol. Biol. Cell, 19, 3514-3525, 2008
16. Kimata Y. et al., J. Cell Biol., 179, 75-86, 2007
17. Oikawa D. et al., J. Cell Sci., 120, 1681-1688, 2007
18. Furukawa N. et al., J. Biochem., 140, 831-841, 2006
19. Kimata Y. et al., J. Cell Biol., 167, 445-456, 2004

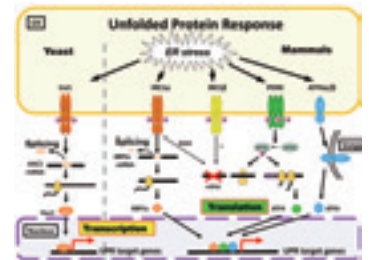


Fig.1 Unfolded Protein Response in yeast and mammals

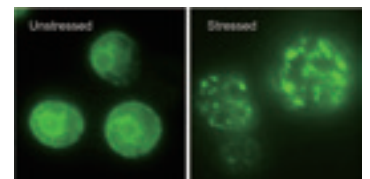


Fig.2 Cluster formation (right) of yeast IRE1 under ER stress

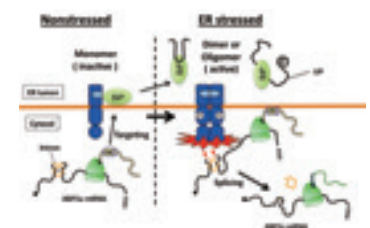


Fig.3 Unconventional splicing of XBP1 mRNA in mammalian IRE1 α -XBP1 pathway

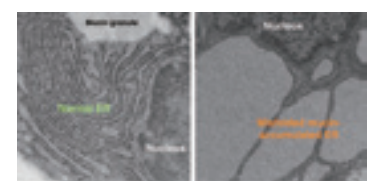


Fig.4 The ER in IRE1 β KO goblet cells is distended with misfolded mucin accumulation.

Laboratory

Tumor Cell Biology

▶ URL: <http://bsw3.naist.jp/eng/courses/courses208.html>



Prof.
Jun-ya Kato



Assist. Prof.
Noriko Kato

E-mail { jkato, noriko-k }@bs.naist.jp

Outline of Research and Education

We focus on the molecular mechanisms controlling proliferation, differentiation, and death of mammalian cells, and study the connection between cell cycle progression and oncogenesis, as well as differentiation, proliferation, and leukemogenesis in hematopoietic cells. The findings can be applied to regenerative medicine and cancer research. We use the following experimental systems:

- an in vitro culture system using mouse and human cell lines
- an in vitro differentiation system using ES cells and primary cultures
- a mouse model system using knockout mice and transgenic mice

Major Research Topics

1. Cell cycle control and oncogenesis
2. Leukemogenesis
3. Hematopoietic stem cells

References

1. Kato JY. and Yoneda-Kato N., *BioMolecular Concepts.*, 1, 403, 2010
2. Kato JY. and Yoneda-Kato N., *Genes to Cells*, 14, 1209, 2009
3. Yoneda-Kato N. et al., *Mol. Cell Biol.*, 28, 422, 2008
4. Yoneda-Kato N. et al., *EMBO J.*, 24, 1739, 2005
5. Tomoda K. et al., *Nature*, 398, 160, 1999
6. Kato JY. et al., *Cell*, 79, 487, 1994

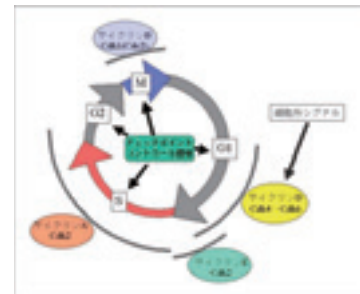


Fig.1 Cell cycle and cyclin/Cdk complexes

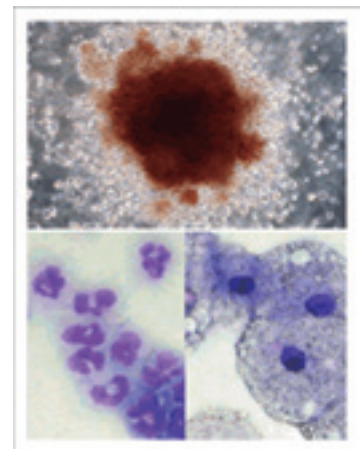


Fig.2 A group of erythrocytes and leukocytes (upper), neutrophils (lower left) and macrophages (lower right), which were induced to differentiate from ES cells in vitro



Fig.3 A chimeric mouse generated by infusion of genetically modified ES cells

Laboratory

Microbial Molecular Genetics

► URL: <http://bsw3.naist.jp/eng/courses/courses301.html>



Prof.
Hisaji Maki



Assoc. Prof.
Masahiro Akiyama



Assist. Prof.
Satoko Maki



Assist. Prof.
Asako Furukohri

E-mail { maki, akiyamam, smaki, furukori }@bs.naist.jp

Outline of Research and Education

At our laboratory, we have been studying how genetic information is precisely transmitted from parent cells to daughter cells and, conversely, how mutation is induced by inaccurate transmission of genetic information. To approach these questions, it is important to understand molecular mechanisms of genomic stability and molecular functions of DNA replicative apparatus. We are also exercising our best efforts in the international education of young students who are highly interested in basic issues related to DNA transaction and the molecular mechanisms of organism evolution. We want to help our laboratory members become globally active individuals who act and think independently.

Major Research Topics

- 1. Mechanisms for spontaneous mutation and its suppression (Fig.1)**
 - Onset of DNA replication errors and their repair
 - Generation of DNA damage due to oxygen radicals and its repair
 - Spontaneous mutation induced by cellular growth environments
- 2. Molecular mechanisms for genetic stability (Fig.2)**
 - Control mechanisms for genetic recombination
 - Roles of DNA damage response and cell cycle checkpoint control
- 3. Molecular functions of DNA replicative apparatus (Fig.3)**
 - Biochemical activities of DNA polymerases
 - Replication fork arrest and its recovery processes
 - Dynamics of DNA replication machineries

References

1. H. Maki, Annual Review of Genetics, 36, 279-303, 2002
2. K. Higuchi et al., Genes to Cells, 8, 437-449, 2003
3. A. Sakai et al., Genes to Cell, 11, 767-778, 2006
4. K. Hasegawa et al., Genes to Cells, 13, 459-469, 2008
5. A. Furukohri et al., J. Biol. Chem., 283, 11260-11269, 2008
6. K. Uchida et al., Mol. Microbiology, 70, 608-622, 2008
7. S. Ide et al., Science, 327, 639-696, 2010
8. A. Furukohri et al., Nuc. Acid Res., 40, 6039-6048, 2012
9. T. Mori et al., Genes Genet. Syst., 87, 75-87, 2012

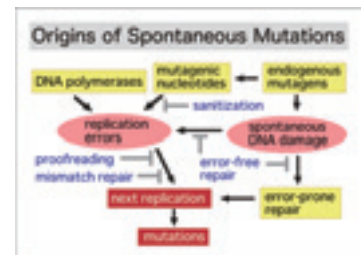


Fig.1 Multiple mechanisms suppress mutations. However, spontaneous DNA lesions serve as major causes of mutation under normal growth conditions.



Fig.2 When DNA replication occurs without repair of DNA lesions, replication fork progression is inhibited. Mechanisms to rescue arrested replication forks include recombination repair, regression of replication forks and translesion DNA synthesis.

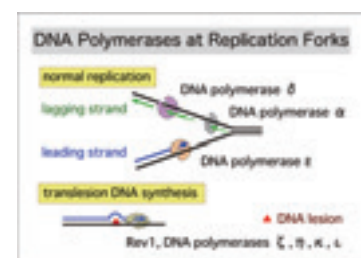


Fig.3 Multiple DNA polymerases ordinary work together for efficient DNA replication, thereby replication errors are suppressed. Special DNA polymerases work in both eukaryote and bacteria for translesion DNA synthesis (References 4 & 5).

Laboratory

Systems Microbiology

► URL: <http://bsw3.naist.jp/eng/courses/courses302.html>



Prof.
Hirotada Mori

E-mail hmori@gtc.naist.jp

Outline of Research and Education

Escherichia coli is undoubtedly one of the most studied organisms in the world. A vast amount of accumulated biological knowledge and methodologies makes this organism one of the ideal platforms to analyze cells at a systems level. Our lab is one of the leading groups performing post-genomic, systems and synthetic analyses using *E. coli* as a model system.

1. Genetic interactions

Normally cell systems can tolerate many kinds of perturbation, e.g. environmental changes and genetic mutations. In *E. coli*, most single gene knockout strains do not exhibit substantial phenotypic changes. This characteristic is called “robustness” and is caused by the function of a network of compensatory backup systems. This is one of the main reasons why the computational design of a cell system has been unsuccessful so far. Genetic interaction analysis is one of the most reliable ways to identify and characterize cellular pathways. To determine the cellular network system in *E. coli*, we are performing high-throughput systematic genetic interaction studies using double-gene knockout strains.

2. Bar-code analysis

If each single gene knockout strain has a specific tag, and if we have a way to distinguish their tags from a single cell, then mixed cultures of all the deletion strains can be analyzed simultaneously to monitor population dynamics under competitive growth conditions. For this purpose, we developed a new single gene knockout mutant library carrying 20nt DNA sequences as a bar-code. To validate our approach, we are currently analyzing population changes during growth in a liquid medium for up to three weeks by monitoring the bar-code frequency of each of the deletion strains using deep sequencing methods.

3. Genome size design and cross-species transfer of DNA by conjugation

We have developed a very efficient method to construct double knockout strains using F-plasmid-based DNA-conjugation. The F- (*incF*) plasmid has a narrow host-range but *incP* and *incW* plasmid families have much wider host-ranges. We are expanding our conjugation vector system from the F-plasmid to the *incP* and *incW* plasmids to enable the transfer of large DNA molecules from *E. coli* into other microbes. Our long-term purpose is to design genome-size DNA molecules within constructed vectors and establish transfer systems to conjugate them into target micro-organisms.

Major Research Topics

1. Analysis of genetic interaction networks
2. Quantitative metabolic network analysis
3. Development of cross-transfer systems of huge DNA

References

1. Tohsato Y. et al., J Bioinform Comput Biol, 8 Suppl 1: 83-99, 2010
2. Rajagopala SV. et al., BMC Genomics, 11(1), 470, 2010
3. Yamamoto N. et al., Mol Syst Biol, 5: 335, 2009
4. Typas A. et al., Nat Methods, 5(9), 781-787, 2008
5. Butland G. et al., Nat Methods, 5(9), 789-795, 2008
6. Baba T. et al., Mol Syst Biol, 2, 0008, 2006
7. Arifuzzaman M. et al., Genome Res, 16(5), 686-691, 2006

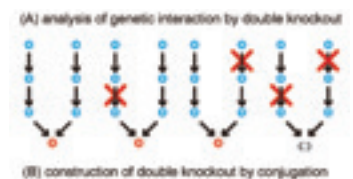


Fig.1 (A) The concept of synthetic lethal/sickness analysis: Red circles represent essential metabolites for cells. If cells have redundant routes to produce essential metabolites, double deletion methods may identify such redundant steps of genes (enzymes). (B) The conjugation method to generate double knockout strains by combining single knockout strains

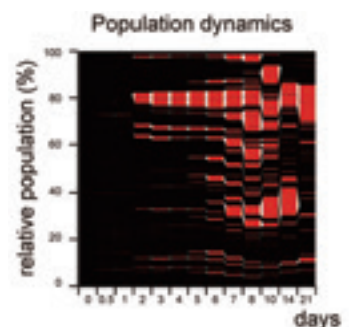


Fig.2 The X axis shows time points of samplings and the Y axis represents population ratio of all deletion strains.

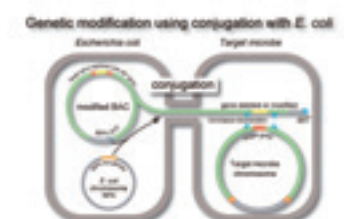


Fig.3 Wide host-range *incP* family plasmid RP4 can deliver large plasmid DNA by cross-species conjugation.

Laboratory

Cell Signaling

▶ URL: <http://bsw3.naist.jp/eng/courses/courses304.html>



Prof.
Kaz Shiozaki



Assist. Prof.
Hisashi Tatebe



Assist. Prof.
Tomoyuki Fukuda

E-mail { kaz, htatebe, tfukuda }@bs.naist.jp

Outline of Research and Education

Our research aims to elucidate intracellular signaling networks that sense and transmit diverse extracellular stimuli, with particular focus on the signaling pathways involved in cancerous cell proliferation and metabolic syndromes such as diabetes. To identify and analyze novel components of the signaling pathways, the studies utilize the fission yeast *Schizosaccharomyces pombe* (Fig.1), which has been successfully used as a genetically amenable model system to investigate cellular regulatory mechanisms conserved from yeast to human. Students in our laboratory are encouraged to design multifaceted approaches that logically combine research tools in molecular genetics, cell biology and biochemistry. Originally established in 1998 at University of California-Davis, our laboratory has been training researchers that can serve the international scientific community.

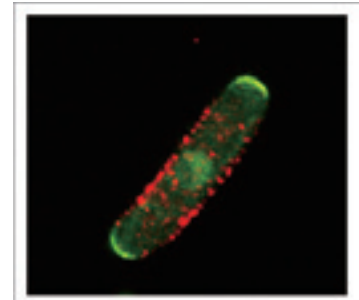


Fig.1 Fission yeast *Schizosaccharomyces pombe*

Major Research Topics

1. TOR (Target Of Rapamycin) signaling pathway

TOR kinase forms a protein complex called TORC2, which mediates insulin-induced activation of Akt kinase and cellular uptake of glucose (Fig.2). Defects in insulin signaling result in type 2 diabetes and therefore, comprehensive understanding of this pathway is crucial for the development of informed strategies to treat the disease.

2. Stress-responsive MAP kinase cascade

Stress-activated protein kinase (SAPK) is a member of the MAP kinase family that plays pivotal roles in cellular stress responses, including those of cancer cells exposed to cytotoxic therapies. Our goal is to discover cellular "stress sensors" that transmit signals to induce activation of SAPK.

References

- Morigasaki S. et al., Mol. Biol. Cell, 23, 1083-1092, 2013
- Tatebe H. et al., Curr. Biol., 20, 1975-1982, 2010
- Tatebe H. and Shiozaki, K., Small GTPases, 1, 180-182, 2010
- Morigasaki S. and Shiozaki, K., Meth. Enzymol., 471, 279-289, 2009
- Shiozaki K., Sci. Signal., 2, pe74, 2009
- Morigasaki S. et al., Mol. Cell, 30, 108-113, 2008
- Tatebe H. et al., Curr. Biol., 18, 322-330, 2008
- Ikeda K. et al., Cell Cycle, 7, 358-364, 2008
- Tatebe H. et al., Curr. Biol., 15, 1006-1015, 2005
- Tatebe H. and Shiozaki K., Mol. Cell. Biol., 23, 5132-5142, 2003
- Santos J. L. and Shiozaki K., Science's STKE, 98, re1, 2001
- Nguyen A. N. and Shiozaki K., Genes Dev., 13, 1653-1663, 1999
- Shiozaki K. and Russell P., Genes. Dev., 10, 2276-2288, 1996
- Shiozaki K. and Russell P., Nature, 378, 739-743, 1995

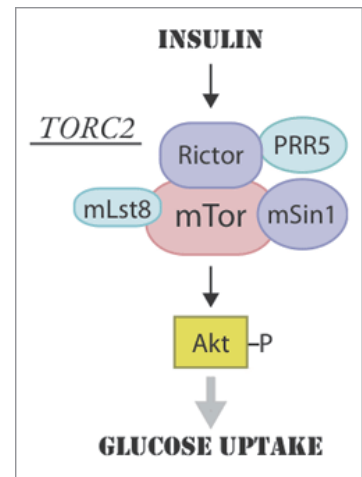


Fig.2 TOR complex 2 (TORC2) mediates insulin signals that induce cellular uptake of glucose.

Laboratory

Applied Stress Microbiology

► URL: <http://bsw3.naist.jp/eng/courses/courses305.html>



Prof.
Hiroshi Takagi



Assist. Prof.
Iwao Ohtsu



Assist. Prof.
Daisuke Watanabe

E-mail { hiro, iohtsu, d-watanabe }@bs.naist.jp

Outline of Research and Education

Our research is involved in “Applied Molecular Microbiology”. The aims of our laboratory are basic studies in microbial science, particularly cellular response and adaptation to environmental stresses, and practical applications in new biotechnology. To fully understand microbial cell functions under stress conditions, we analyze and improve various mechanisms of microorganisms from molecular, metabolic and cellular aspects. As the best scenario, novel findings of our basic studies can be applied to the molecular breeding of useful microorganisms (yeasts, bacteria), the production of valuable biomaterials (enzymes, amino acids) and the development of promising technologies to solve environmental issues (bioethanol etc.).

Major Research Topics

1. Stress response and tolerance in yeast *Saccharomyces cerevisiae* (Figs.1, 2)

We are interested in cellular response and adaptation to environmental stresses in the yeast *Saccharomyces cerevisiae*, which is an important microorganism in the basic science as a model for higher eukaryotes. Yeast is also a useful microbe in the fermentation industry for the production of breads, alcoholic beverages and bioethanol. During fermentation, yeast cells are exposed to various stresses, including ethanol, high temperature, desiccation and osmotic pressure. Such stresses induce protein denaturation, reactive oxygen species generation, and lead to growth inhibition or cell death. In terms of application, stress tolerance is the key for yeast cells. We analyze the novel stress-tolerant mechanisms of yeast listed below.

- Proline: Metabolic regulation, transport mechanism, physiological functions
- N-Acetyltransferase Mpr1: Antioxidative mechanism, structural and functional analysis
- Nitric oxide (NO): Its synthetic mechanism and physiological roles
- Ubiquitin system: Quality control of abnormal proteins, regulation of the ubiquitin ligase Rsp5 activity

2. Physiological roles and metabolic regulation of cysteine in *Escherichia coli* (Fig.3)

L-Cysteine is an important amino acid both biologically and commercially. For achieving cysteine fermentation directly from glucose, we analyze the regulatory mechanisms of its biosynthesis, degradation and transport, based on genomic information and metabolic engineering. Also, we are interested in physiological roles of cysteine and its transporters in terms of redox regulation, and recently proposed that the inducible cysteine/cystine shuttle system plays a pivotal role in oxidative stress tolerance through providing a reducing equivalent to the periplasm in *E. coli*.

References

1. Stress response and tolerance in yeast *Saccharomyces cerevisiae*
 - Nasuno R. et al., Proc. Natl. Acad. Sci. USA, 110, 11821-11826, 2013
 - Sasaki T. and Takagi H., Gene Cells, 18, 459-475, 2013
 - Nishimura A. et al., Biochem. Biophys. Res. Commun., 430, 137-143, 2013
 - Bach T.M.H. et al., Appl. Microbiol. Biotech., 97, 247-257, 2013
 - Sasano Y. et al., Microb. Cell Fact., 11:40 doi:10.1186/1475-2859-11-40, 2012
 - Hiraishi H. et al., FEBS J., 276, 5287-5297, 2009
 - Kaino T. et al., Appl. Environ. Microbiol., 74, 5845-5849, 2008
 - Haitani Y. and Takagi H., Genes Cells, 13, 105-116, 2008
 - Nomura M. and Takagi H., Proc. Natl. Acad. Sci. USA, 101, 12616-12621, 2004
 - Hoshikawa C. et al., Proc. Natl. Acad. Sci. USA, 100, 11505-11510, 2003
2. Physiological roles and metabolic regulation of cysteine in *Escherichia coli*
 - Nakatani T. et al., Microb. Cell Fact., 11:62 doi:10.1186/1475-2859-11-62, 2012
 - Ohtsu I. et al., J. Biol. Chem., 285, 17479-17487, 2010

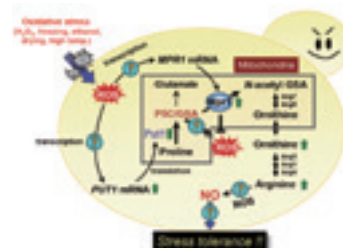


Fig.1 Novel oxidative stress-tolerant mechanism in *S. cerevisiae*

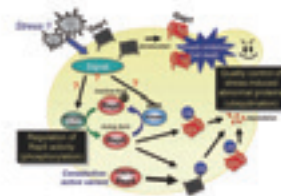


Fig.2 Ubiquitin system in *S. cerevisiae* under stress conditions

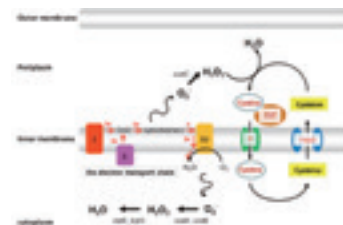


Fig.3 The cysteine/cystine shuttle system in *E. coli*

Laboratory

Structural Biology

► URL: <http://bsw3.naist.jp/eng/courses/courses306.html>



Prof.
Toshio Hakoshima

E-mail hakosima@bs.naist.jp, { [kkitano](mailto:kkitano@is.naist.jp), [y-h](mailto:y-h@is.naist.jp) }@is.naist.jp



Assist. Prof.
Ken Kitano



Assist. Prof.
Yoshinori Hirano

Outline of Research and Education

Proteins are folded into specific three dimensional (3D) structures. These structures are essential for imparting functions such as molecular recognition and catalysis. Without precise knowledge of their 3D-structures, we are unable to understand how proteins execute their respective molecular functions. It is virtually impossible to predict protein 3D-structures from amino acid sequences alone. Thus, the experimental determination of protein 3D-structures represents the hallmark of structural biology. Structural biology in our laboratory is performed using X-ray crystallography to determine the 3D-structures of proteins and molecular complexes at atomic resolution, and biochemical/biophysical analyses are performed to delineate the mechanisms by which proteins function at the atomic, molecular, and cellular levels.

Our general goal is to contribute towards our understanding of the nature of life. Our long-term objective is to understand the molecular functions of proteins and other biological macromolecules and their complexes in terms of molecular structures. Our efforts are directed towards defining the manner by which protein interactions and 3D-structures determine specificity and how structural changes enable functional switches in living cells.

Major Research Topics

1. Structural molecular medicine
2. Structural cell biology
3. Structural molecular biology
4. Structural plant biology

References

1. Hirano et al., EMBO J., 30, 2734-2747, 2011
2. Terawaki et al., EMBO J., 29, 236-250, 2010
3. Murase et al., Nature, 456, 459-463, 2008
4. Yamaguchi et al., Structure, 14, 589-600, 2006
5. Sakurai et al., EMBO J., 24, 683-693, 2005
6. Hamada et al., EMBO J., 22, 502-514, 2003
7. Fujii et al., Nat. Struct. Biol., 7, 889-893, 2000
8. Hamada et al., EMBO J., 19, 4449-4462, 2000
9. Maesaki et al., Mol. Cell, 4, 793-803, 1999
10. Kato et al., Cell, 88, 717-723, 1997

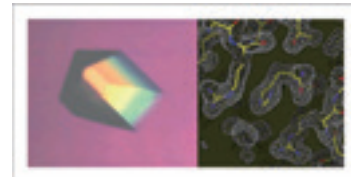


Fig.1 A crystal of histidine protein phosphatase (left), crystallized in our laboratory and part of its electron density map at 1.9 Å resolution obtained from X-ray crystal structure analysis

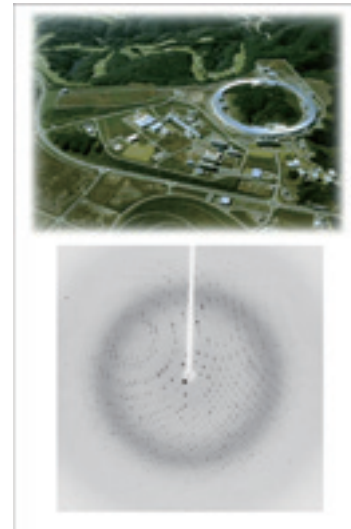


Fig.2 The SPring-8 synchrotron radiation facilities at Harima, Hyogo. We perform X-ray intensity data collection at SPring-8 for structure determination.

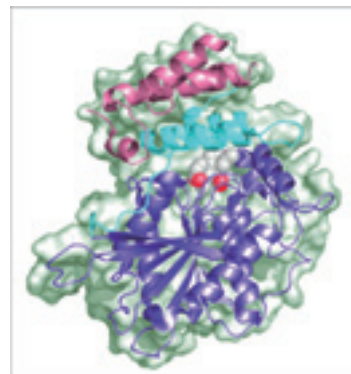


Fig.3 The ternary complex of gibberellin (space-filled model in white and red)-bound receptor GID1 (blue and cyan) trapping its downstream effector protein DELLA protein (pink) from our recent Nature article [3]

Laboratory

Membrane Molecular Biology

► URL: <http://bsw3.naist.jp/eng/courses/courses309.html>



Assoc. Prof.
Tomoya Tsukazaki



Assist. Prof.
Yoshiki Tanaka

E-mail { tsukaza, yotanaka }@bs.naist.jp

Outline of Research and Education

In the cell, a variety of membrane protein complexes are involved in the fundamental biological processes. The Sec membrane protein complex embedded in the cytoplasmic membrane in bacteria or the endoplasmic reticulum membrane in eukaryotes is the essential machinery for translocation of newly synthesized proteins across membranes (Fig.1). In bacteria, protein transport to the periplasm via a hetero trimeric complex called Sec translocon, composed of SecY, SecE and SecG, is driven by ATP-dependent motor SecA and proton-dependent motor SecDF cooperatively (Fig.2). We had determined crystal structures of all of the Sec factors [2, 4, 6] and performed structure-directed functional studies, which enabled us to propose conformational changes of Sec proteins during protein translocation. However, the details of the molecular mechanism remain unclear. Sec structures of other forms and at high resolution are required to fully understand Sec protein translocation machinery. In our laboratory, we perform structural biological analysis, including a new technique, for visualizing the protein translocation (Fig. 3). Our results will lead to the understanding of not only protein transport across the membrane but also the transport mechanism of various materials including drugs.

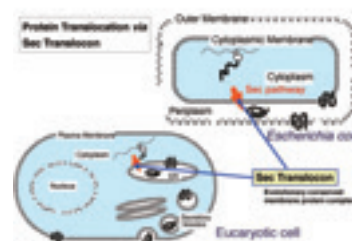


Fig.1 Conserved protein translocation across the membrane

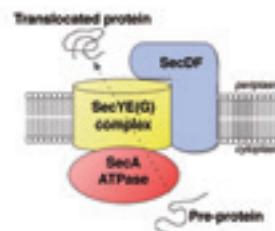


Fig.2 Bacterial Sec machinery: SecYEG complex provides the pore for protein movement that is driven by two motors, SecA and SecDF.

Major Research Topics

1. Protein transport across cell membranes
2. Molecular function and dynamics of membrane proteins

References

1. Tanaka Y. et al., Nature, 496, 247-251, 2013
2. Tsukazaki T. et al., Nature, 474, 235-238, 2011
3. Higuchi T., Hattori M., Tanaka Y., et al., Proteins, 76, 768-771, 2009
4. Tsukazaki T. et al., Nature, 455, 988-911, 2008
5. Hattori M., Tanaka Y. et al., Nature, 448, 1072-1075, 2007
6. Vassilyev D.G., Mori H., Vassilyeva M.N., Tsukazaki T. et al., J. Mol. Biol, 364, 248-258, 2006
7. Mori H., Tsukazaki T. et al., J. Biol. Chem. 278, 14257-14264, 2003

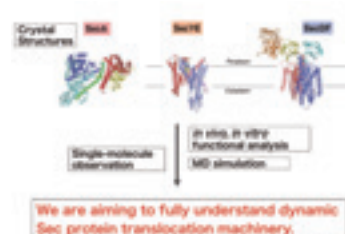


Fig.3 Our strategy for visualizing protein translocation

Laboratory

Biodynamics and Integrative Biology

▶ URL: <http://bsw3.naist.jp/eng/courses/courses307.html>



Prof.
Narutoku Sato
(Thomas N. Sato)



Assist. Prof.
Takashi Akanuma



Assist. Prof.
Norio Takada



Assist. Prof.
Kyoji Urayama

E-mail { island1005, takanuma, ntakada, kurayama }@bs.naist.jp

Outline of Research and Education

Our long-long term goal is to understand the dynamic and complex nature of biological systems in a quantitative manner, and eventually to develop a quantitative theorem that unifies a variety of biological processes. We also apply our experimental and theoretical findings to uncover the mysteries of human diseases. We use not only classical molecular and cellular biological tools, but also import and use concepts, principles, and tools from other disciplines such as physics, engineering, chemistry, computer science, mathematics to challenge fundamentally significant questions in life science. Because of the cross-disciplinary nature of our approaches, we have a number of on-going collaborations at both domestic and international levels. Prof. Sato is an internationally accomplished scientist, with significant experience in research and education in top research institutions and universities in the USA for over 20 years, and he currently holds adjunct professor positions at Cornell University, USA, and Centenary Institute in Sydney, Australia. Students and scientists in this laboratory gain experience and training to become pioneers and future leaders at the international level.

Major Research Topics

1. Molecular mechanisms of human diseases (Fig.1)
2. Interdisciplinary approaches towards inventing next-generation tissue engineering tools for regenerative medicine (Fig.2)
3. Mechanisms of stochasticity and its buffering in biology and disease (Fig.3)

References

Listed among the top 1% most cited authors for journals in Molecular Biology and Genetics

1. B. Ding et.al., Cell, 147, 539-553, 2011
2. B. Ding et.al, Nature, 468, 310-315, 2010
3. A.T. Hooper et.al., Cell Stem Cell, 4, 263-274, 2009
4. K. Kobayashi et.al., Nature Cell Biol., 11, 46-55, 2009
5. M.M. Wu and T.N. Sato, PLoS ONE, 3, e4045, 2008
6. R.P. Visconti et.al., Proc. Natl. Acad. Sci. USA, 99, 8219-8224, 2002
7. S. Loughna and T.N.Sato, Molecular Cell, 7, 233-239, 2001
8. G. Thurston et.al., Science, 286, 2511-2514, 1999
9. C. Suri et.al., Science, 282, 468-471, 1998
10. P.C. Maisonpierre et.al., Science, 277, 55-60, 1997
11. T.M. Schlaeger et.al., Proc. Natl. Acad. Sci. USA, 94, 3058-3063, 1997
12. C. Suri et.al., Cell, 87, 1171-1181, 1996
13. T.N. Sato et.al., Nature, 376, 70-74, 1995
14. T.N. Sato et.al., Proc. Natl. Acad. Sci. USA, 90, 9355-9358, 1993



Fig.1 Molecular mechanisms of human diseases

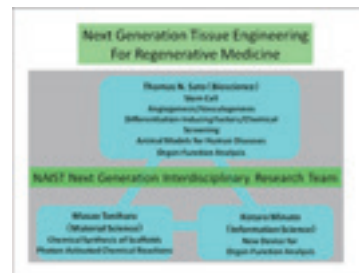


Fig.2 Interdisciplinary approach towards inventing next-generation tissue engineering tools for regenerative medicine



Fig.3 Mechanisms of stochasticity and its buffering in biology and disease

Laboratory

Gene Regulation Research

► URL: <http://bsw3.naist.jp/eng/courses/courses308.html>



Prof.
Yasumasa Bessho



Assist. Prof.
Takaaki Matsui



Assist. Prof.
Yasukazu Nakahata

E-mail { ybessho, matsui, yasu-nakahata }@bs.naist.jp

Outline of Research and Education

Organisms are composed of various cells arranged in a well-coordinated manner. A fertilized egg repeats cell division and differentiates into the animal body in embryogenesis, in which various phenomena take place in a pre-determined order controlled by the inherent “biological clock” in each living body. We attempt to clarify the principles of animal morphogenesis through investigating the mechanisms of the “biological clock” that controls various life phenomena during embryonic development.

Major Research Topics

Research on somitogenesis in vertebrates as a model system for the biological clock

A mouse's body is composed of a metameric structure along the anteroposterior axis. For example, the spine is made up of the accumulation of multiple vertebrae, each of which is similar in shape. Such metamerism is based on the somite, which is a transient structure in the mid-embryogenesis. Somites are symmetrically arranged on both sides of the neural tube as even-grained epithelial spheres that give rise to vertebrae, ribs, muscles and skin.

The primordium of the somite, located at the caudal tip of the mouse embryo, extends posteriorly. The anterior extremity of the somite primordium is pinched off to generate a pair of somites in a two-hour cycle, resulting in the formation of repeats of a similar size structure. On the basis of this finding, it has been considered that there is a biological clock, which determines the two-hour cycle, in the primordium of somites. The expression of several genes oscillates in the primordium of somites, corresponding to the cycle of somite segmentation, which serves as molecular evidence of the biological clock. We are exploring the mechanisms of the biological clock on the basis of such oscillatory gene expression.

References

1. Nitanda Y. et al., FEBS J, in press
2. Retnoaji B. et al., Development, in press
3. Matsui T. et al., Development, 139, 3553, 2012
4. Kim W. et al., Mol Biol Cell, 22, 3541, 2011
5. Matsui T. et al., PNAS, 108, 9881, 2011
6. Hayashi S. et al., PLoS ONE, 4, e5603, 2009

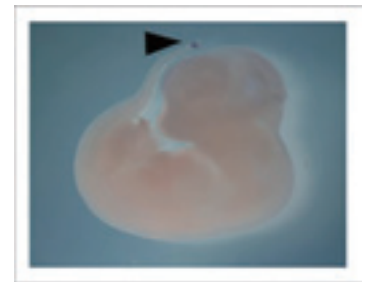


Fig.1 Transcription factor Hes7, serving as a molecular clock, is specifically expressed in the primordium of somites.

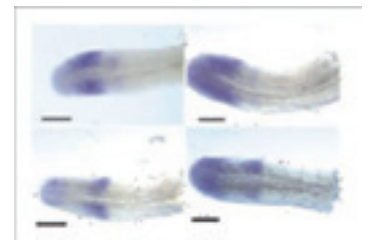


Fig.2 The expression of Hes7 oscillates in the the primordium of somites

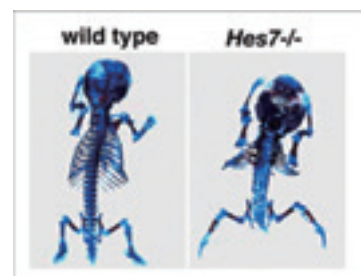


Fig.3 In Hes7 knockout mice, somite segmentation does not occur cyclically and the metameric structures along the anteroposterior axis are lost.

Laboratory

Plant Function Analysis

▶ URL: <http://bsw3.naist.jp/eng/courses/courses901.html>



Prof.
Masao Tasaka



Assoc. Prof.
Noriko Inada



Assoc. Prof.
Tetsuya Kurata



Assoc. Prof.
Yoichiro Fukao



Assist. Prof.
Masayuki Fujiwara

E-mail { m-tasaka, norikoi, tekurata, fukao, fujiwara }@bs.naist.jp

Outline of Research and Education

Our laboratory started in 2010 within the framework of the Plant Science Global Top Education Program, supported by the Ministry of Education, Culture, Sports, Science and Technology. The aims of this program are to establish an educational system linking nationwide universities and institutes, and to cultivate young plant researchers for the promotion of future plant science in Japan.

With the goal of promoting education on frontier technologies, we focus on rapidly advancing research fields such as genome-transcriptome analysis, biochemical and proteomic analysis of intracellular protein complexes, and visualization of those protein-protein interactions in living cells. Four researchers are assigned to this education purpose; Dr. Tetsuya Kurata has expertise in genome-transcriptome analysis with high-throughput next generation sequencer; Dr. Masayuki Fujiwara is a biochemist whose focus is on protein purification by various biochemical methods; Dr. Yoichiro Fukao specializes in proteomic analysis using the latest mass spectrometers; Dr. Noriko Inada is an expert of bioimaging using confocal and multiphoton microscopies.

Every year, we select up to 30 graduate students who have applied with their own research proposals employing genome-transcriptome analysis, biochemical and proteomic analysis, or bioimaging analysis to investigate plant protein function. These selected graduate students will benefit from a one week of training in the above-mentioned cutting-edge technologies as well as avid interaction with other participating graduate students from various universities and institutes.

Major Research Topics

1. Genome-Transcriptome analysis (Tetsuya Kurata)
2. Purification and Analysis of Protein complex (Masayuki Fujiwara)
3. Proteome analysis (Yoichiro Fukao)
4. Bioimaging analysis (Noriko Inada)

References

1. Uchiyama S., Okabe K., Inada N., Hikarikagaku, 43, 24-27, 2012
2. Okabe K. et al., Nat. Commun., 3, 705, 2012
3. Nishiyama T. et al., PLoS ONE, 7, e36471, 2012
4. Banks J.A. et al., Science, 332, 960-963, 2011
5. Fujiwara M. and Shimamoto K., Kagaku-To-Seibutsu, 47, 378-380, 2009
6. Chen L. et al., Cell Host Microbe., 7, 185-96, 2010
7. Fukao Y. et al., Plant Physiol., 155, 1893-1907, 2011
8. Fukao Y., Plant Cell Physiol., 53, 617-625, 2012
9. Inada N. and Savory E.A., J Gen Plant Pathol, 77, 273-281, 2011

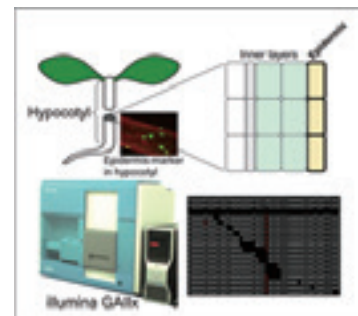


Fig.1 Coordinated growth among cell layers in Arabidopsis hypocotyl, and data from NGS



Fig.2 LTQ-Orbitrap XL and TSQ-Vantage

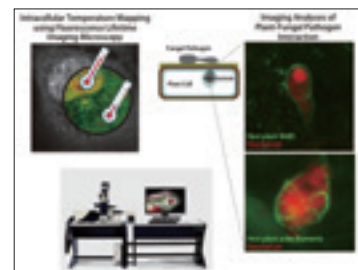


Fig.3 Imaging cellular temperature and powdery mildew-Arabidopsis interaction

Affiliate Laboratory

Molecular Genetics of Human Diseases

(with Osaka Medical Center for Cancer and Cardiovascular Diseases)

▶ URL: <http://bsw3.naist.jp/eng/courses/courses501.html>



Prof.
Kikuya Kato

E-mail katou-ki@mc.pref.osaka.jp

Outline of Research and Education

It is important to describe patient status accurately for proper diagnosis. One of the diagnostic methods for cancer is biomarkers, biological substance which accurately surrogate pathological parameter(s) of a patient. Exploration of new biomarkers is one of the major topics of current cancer research. Our main interest is the invention of new biomarkers based on nucleic acids.

Major Research Topics

1. Noninvasive personalized medicine

Gefitinib is a good example of “personalized medicine”(Fig.1). It is only used for lung cancer with activating EGFR mutations. An important concern in clinical practice is that biopsy to obtain tumor samples is often difficult. In particular, biopsy for advanced or resistant cases is very difficult, and repeated sampling is almost impossible. A non-invasive technique such as detection of tumor DNA in peripheral blood is desirable.

We introduced a technique called BEAMing (beads, emulsion, amplification, matnetics) (Dressman et al., PNAS, 100, 8817, 2003), and used it for detection of EGFR mutations in plasma of lung cancer patients (Taniguchi et al., 2011). BEAMing and next-generation sequencers are based on the same technological principle. The mutations are sought with massively repeated sequencing of the EGFR gene fragments. We have already set up an assay system with a semiconductor sequencer (Fig.2), and are confirming its feasibility for EGFR mutation detection with Department of Thoracic Oncology.

2. Development of diagnosis and treatment methods via gene expression profiles

Gene expression profiling is one genomic approach, measuring expression levels of a large number of genes simultaneously. DNA chips or DNA microarrays are the most popular technique. Instead, we developed a high-throughput quantitative PCR technique called adaptor-tagged competitive PCR (ATAC-PCR) (Kato, 1997), and have conducted analysis of more than 1,500 solid tumor tissues. The expression data and accompanying clinical information are stored in Cancer Gene Expression Database (CGED, <http://lifesciencedb.jp/cged>). The major outcomes include prediction of prognosis and docetaxel response in breast cancer, and prediction of prognosis in glioma (Shirahata et al. 2009) (Fig.3). In particular, we are confirming the performance of the glioma diagnostic system with samples in the Kitano Hospital, the National Cancer Center Hospital and Tokyo Women’s Medical University Hospital.

References

1. Taniguchi K. et al., Clin. Cancer Res., 17, 7808-7815, 2011
2. Shirahata M. et al., Cancer Science, 100, 165-172, 2009
3. Iwao-Kooizumi K., J. of Clin. Oncol., 23, 422-431, 1995
4. Kato K., Nucleic Acids Res., 33, 4694-4696, 1997
5. Kato K., Nucleic Acids Res., 33, 4694-4696, 1997
6. Kato K., Trends Neurosci., 15, 319-323, 1992



Fig.1 Personalized medicine

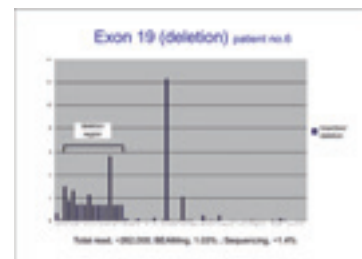


Fig.2 Detection of activating EGFR mutation in plasma of a lung cancer patient with massively repeated sequencing

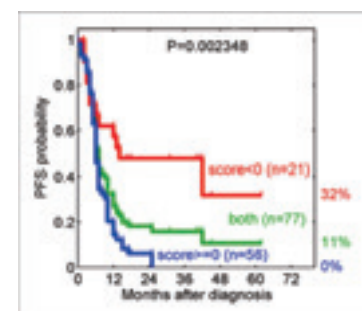


Fig.3 Kaplan-Meier analysis of glioma patients stratified with our prognosis predictor: All patients were stage IV.



Prof.
Kazuo Emoto

E-mail emoto@obi.or.jp

Outline of Research and Education

The human brain receives, processes, stores, and transmits complex information with great fidelity. The neuronal network that underlies these functions is comprised of an estimated 10¹¹ neurons linked by over 10¹⁴ synaptic connections between two structurally and functionally different neurites, axons and dendrites. Precise patterning of dendrites as well as axons is essential for the correct wiring and function of neural circuits. We combine genetics, imaging, and biochemical approaches to investigate the interplay between genetic and epigenetic control of neural morphogenesis, and deduce the functional importance of these regulatory systems in disease etiology. We use fruitflies and mice as research models.

Major Research Topics

1. Structural plasticity of neuronal circuits

Neuronal circuits in the brain are not static. In many systems, especially during critical periods of development, neurons exhibit a period of juvenile plasticity in which connectivity can be modified in response to sensory input or following specific experiences, thereby providing neurons with new response properties tailored to the new environment. To achieve these changes in connectivity, certain neurons modify the shape of their axon and dendritic arbors in response to various stimuli. We have identified novel mechanisms that regulate the structural plasticity of dendritic arbors in fly sensory neurons. We are investigating how these mechanisms are related to the sensory-evoked plasticity in fly and mouse nervous systems.

2. Adult neurogenesis in the brain

Neural stem cells have been found in certain areas of the adult brain. Although the adult neurogenesis likely plays an important role in learning and memory, information is still limited. We are investigating the roles of newly born neurons in the mouse and fruitfly brain.

3. Neural basis for decision-making

Animals always make appropriate decisions based on environmental information. How one can make distinctive decisions based on the same sensory information remains elusive. We utilize *Drosophila* larvae as model animals to dissect the neural circuits responsible for decision-making.

References

1. Yasunaga et al., *Dev. Cell*, 18, 621-632, 2010
2. Koike-Kumagai et al., *EMBO J.*, 28, 3879-3892, 2009
3. Soba et al., *Neuron*, 54, 403-416, 2007
4. Parrish et al., *Genes & Dev.*, 21, 956-972, 2007
5. Emoto et al., *Nature*, 443, 210-213, 2006
6. Koizumi et al., *Nature Neurosci.*, 9, 779-786, 2006
7. Kanai et al., *Dev. Cell*, 8, 203-213, 2005
8. Emoto et al., *Cell*, 119, 245-256, 2004

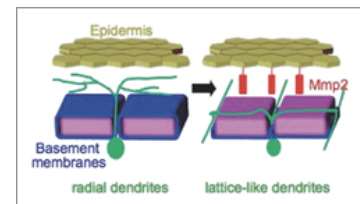


Fig.1 Dendrite reshaping in *Drosophila* sensory neurons

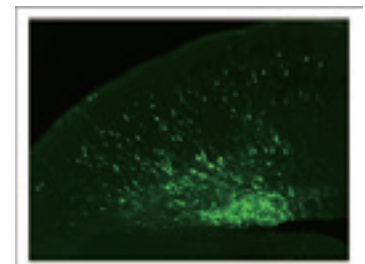


Fig.2 Migration of newborn neurons in adult mouse brain



Fig.3 Light preference of *Drosophila* 3rd instar larvae

Affiliate Laboratory

Tissue Development Dynamics

(with the Center for Developmental Biology, RIKEN)

► URL: <http://bsw3.naist.jp/eng/courses/courses503.html>



Assoc. Professor .
Erina Kuranaga

E-mail kuranaga@cdb.riken.jp

Outline of Research and Education

The development of multicellular organisms involves the collective effects of multiple events at the level of the individual cell, such as proliferation, differentiation, adhesion, and migration. Programmed cell death, for example, is a process by which cells are selected for death at set times in development, allowing for the sculpting of tissue, and is used in the adult organism to maintain homeostasis by eliminating cells that have developed abnormalities. Perturbations in cell death signaling can thus affect an organism's physiological stability, and result in developmental defects, tumorigenesis, or neurodegenerative disease. Cell death plays an important role in maintaining the cellular society not only by eliminating unneeded cells at given sites and stages, but in other functions, such as regulating the proliferation and migration of neighboring cells, as well. Such cellular behaviors give rise to cell networks capable of organizing into tissues, the study of which requires an experimental approach to spatiotemporal information in living systems, such as can be obtained through the real-time live imaging of biological phenomena. Our research goal is to elucidate the physiological roles of cell death and the basic mechanisms for regulating organogenesis using molecular, genetic and bioimaging approaches.

Major Research Topics

We have chosen the fruit fly *Drosophila melanogaster* as our primary research model, seeking to take advantage of its utility in developmental studies and wealth of genetic data in studying the coordination of histogenesis through live imaging and genetic screens. To elucidate the role of cell death in histogenetic processes, we will analyze caspase mutant phenotypes in which the exterior male genitalia (terminalia) develops abnormally. In normal *Drosophila* development, the terminalia rotates 360 degrees as it forms, but in caspase mutants, this revolution is incomplete. Image analysis reveals that in wildtype, the speed of this rotation is variable, with distinct initiation, acceleration, deceleration, and termination stages; caspase inhibition results in loss of the acceleration phase, and failure in terminalia development. We will seek to identify how caspase function and cell death control acceleration of the rotation through searching for associated genes and live imaging analysis. It is further predicted that cell death alone cannot account for the rotation that maintains tissue area, suggesting other mechanisms are also at work. We conduct single-cell analyses to determine whether other behaviors such as proliferation or migration are also altered. Through the use of the extensive *Drosophila* genetics toolset and live imaging technologies, we hope to be able to address questions that have proven technically challenging in the past, and, by visualizing the activities of individual cells, develop a better understanding of how cellular network systems work in histogenesis.

References

1. Takeishi A. Cell Rep, 3, 919-930, 2013
2. Sekine Y. Mol Cell, 48, 692-704, 2012
3. Kuranaga E. Genes Cell, 2012
4. Kuranaga E. et al., Development, 138, 1493-1499, 2011
5. Nakajima Y. et al., Mol Cell Biol, 31, 2499-2515, 2011
6. Koto A. et al., Curr Biol, 21, 278-287, 2011
7. Tonoki A. et al., Genes Cells, 16, 557-564, 2011
8. Kuranaga E. Dev Growth Differ, 53, 137-148, 2011
9. Koto A. et al., J Cell Biol, 187, 219-321, 2009
10. Tonoki A. et al., Mol Cell Biol, 29, 1095-1106, 2009
11. Takemoto K. et al., Proc Natl Acad Sci USA, 104, 13367-13372, 2007
12. Ribeiro P.S. et al., J Cell Biol, 179, 1467-1480, 2007
13. Xue L. et al., Dev Cell, 13, 446-454, 2007
14. Kuranaga E. and Miura M. Trends Cell Biol, 17, 135-144, 2007
15. Kuranaga E. et al., Cell, 126, 583-596, 2006
16. Kanuka H. et al., EMBO J 24, 3793-3806, 2005
17. Kanuka H. et al., Proc Natl Acad Sci USA, 100, 11723-11728, 2003
18. Kuranaga E. et al., Nat Cell Biol, 4, 705-710, 2002

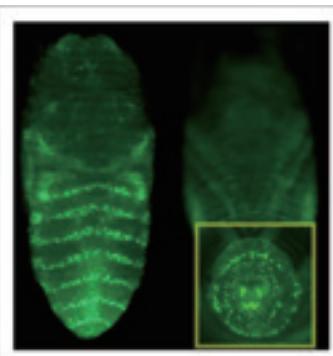


Fig.1 Dorsal (left) and ventral (right) views of *Drosophila* pupae that express fluorescent protein in cells located in the posterior component of each segment. Location of male genitalia is shown in the yellow square.

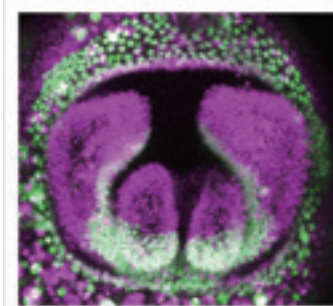


Fig.2 Caudal view of a *Drosophila* male terminalia showing cells in the posterior compartment (green).

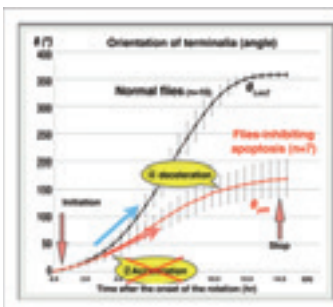


Fig.3 Comparison of the speed of genitalia rotation between normal flies and flies-inhibiting apoptosis.



Assoc. Prof.
Takashi Nishimura

E-mail t-nishimura@cdb.riken.jp

Outline of Research and Education

The processes of animal development, including organ and body size, are genetically predetermined, but these processes are also influenced by environmental factors such as nutrition and temperature. The close link between cell and tissue growth control and environmental cues ensures that developmental transitions occur at the appropriate time during animal development. Our lab's research aims to shed light on the molecular basis for growth control and developmental timing at the cellular and tissue/organ level using the fruit fly *Drosophila melanogaster* and mammalian cell cultures as model systems. We combine biochemical and genetic approaches, along with quantitative and qualitative imaging and cell-biological analysis, to identify and characterize the relevant signal transduction pathways.

Major Research Topics

1. Molecular mechanisms of division arrest in neural stem cells
2. Molecular mechanisms of systemic growth and developmental timing
3. Molecular mechanisms of amino acid signaling

References

1. Okamoto et al., *Genes Dev*, 27, 87-97, 2013
2. Okamoto N. et al., *PNAS*, 109, 2406-2411, 2012
3. Nishimura T., *Tanpakushitsu Kakusan Koso*, 9, 1363-1369, 2009
4. Wirtz-Peitz F. et al., *Cell*, 5, 161-173, 2008
5. Nishimura T. et al., *Dev Cell*, 13, 13-28, 2007
6. Nishimura T. et al., *Mol Biol Cell*, 17, 1237-1285, 2006
7. Nishimura T. et al., *Nat Cell Biol*, 7, 270-277, 2005
8. Nishimura T. et al., *Nat Cell Biol*, 6, 328-334, 2004
9. Nishimura T. et al., *Nat Cell Biol*, 5, 819-826, 2003

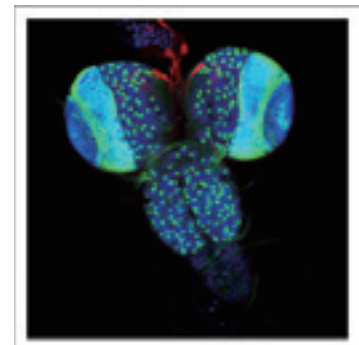


Fig.1 Larval central nervous system in *Drosophila*. Neural stem cells (green) and insulin-producing cells (red) are shown.

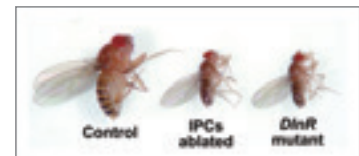


Fig.2 *Drosophila* mutants defective for systemic growth. Down regulation of the insulin signaling leads to the formation of small flies. The picture shows brain insulin-producing cell (IPCs) ablated flies and *Drosophila* insulin receptor (*DInR*) mutant flies.

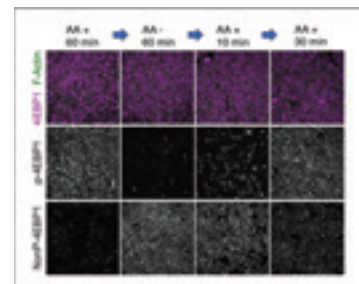


Fig.3 Amino acid response in cultured mammalian cell lines. The phosphorylation level of 4EBP1, a downstream target of the TOR kinase, is used as a readout of amino acid (AA) dependent activation of the TOR. Top panels indicate total 4EBP1 levels. Middle panels indicate phosphorylated 4EBP1, while lower panels indicate non-phosphorylated pools of 4EBP1.

Affiliate Laboratory

Molecular Microbiology and Genetics

(with Research Institute of Innovative Technology for the Earth (RITE))

▶ URL: <http://bsw3.naist.jp/eng/courses/courses505.html>



Prof.
Hideaki Yukawa

E-mail mmg-lab@rite.or.jp

Outline of Research and Education

Global warming resulting from elevated CO₂ and global energy supply problems have been in the limelight in recent years. As these problems originate from rapid economic expansion and regional instability in parts of the world, broad knowledge of global economic systems as well as R&D is required to solve these problems. Fundamental research employing microbial function to tackle the adverse effects of global climate change and mitigate energy supply problems is carried out in our laboratory.

Major Research Topics

1. Biorefinery

Biorefinery is the concept of production of chemicals and fuels from renewable biomass via biological processes. Biorefinery R&D is considered of national strategic importance in the U.S.A. (Fig.1). Biorefinery can be divided into two processes; a saccharification process to hydrolyze biomass to sugars and a bioconversion process to produce chemicals and fuels from the sugars. Based on a novel concept, we have pioneered a highly-efficient “growth-arrested bioprocess” as a bioconversion technology to produce chemicals and fuels (Fig.2). It is based on *Corynebacteria* that are widely used in industrial amino acid production. The key to high efficiency is the productivity of artificially growth-arrested microbial cells, cells with which we evaluate production of organic acids and biofuels. To efficiently produce these products, the cells are tailored for the production of a particular product using post genome technologies like transcriptomics, proteomics and metabolome analyses (Fig. 3).

2. Bioenergy and green chemicals production

Having established the fundamental technology to produce bioethanol from non-food biomass, we are now partnering with the automobile and petrochemical industries to explore commercial applications. We have also developed the platform technology to produce biobutanol, the expected next-generation biofuel, as well as a variety of green chemicals such as organic acids, alcohols and aromatic compounds from which diverse polymer raw materials used in various industries are produced.

References

1. Hasegawa S. et al., *Appl Environ Microbiol*, 78, 865-875, 2012
2. Teramoto H. et al., *Microbiology*, 158, 975-982, 2012
3. Yamamoto S. et al., *Appl Environ Microbiol*, 78, 4447-4457, 2012
4. Vertès A.A. et al., *Annu Rev Microbiol*, 66, 521-550, 2012
5. Tanaka Y. et al., *J Bacteriol*, 194, 6527-6536, 2012
6. Hasegawa S. et al., *Appl Environ Microbiol*, 79, 1250-1257, 2013
7. Toyoda K. et al., *J Bacteriol*, 195, 1718-1726, 2013
8. Teramoto H. et al., *FEBS J*, 280, 3298-3312, 2013
9. Yamamoto S. et al., *Biotechnol Bioeng*, 110, 2938-2948, 2013

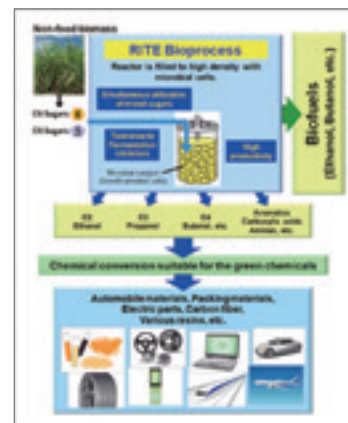


Fig.1 Biorefinery concept

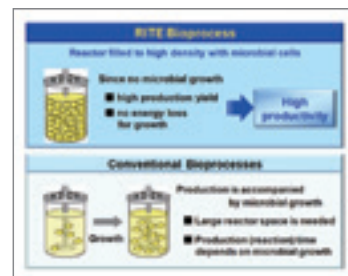


Fig.2 Novel features of the RITE Bioprocess

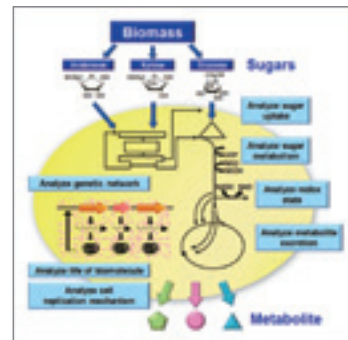
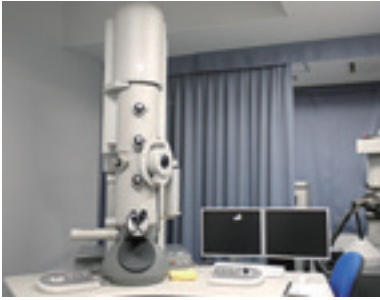


Fig.3 Breeding of recombinant strains using system biology

Abundant Research Facilities

Each department is equipped with a variety of state-of-the-art equipment. Shared equipment, among the most advanced available for biological science research in Japan, is provided at numerous locations within the School.



**Transmission
Electron Microscope**



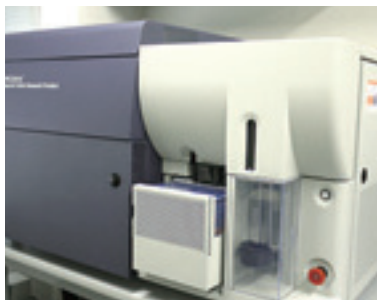
**Scanning
Electron Microscope**



**Confocal Laser Scanning
Microscope**



**Spinning Disk Confocal
Microscope**



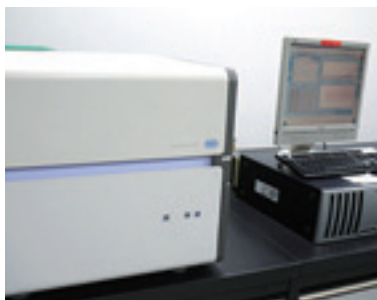
Flow Cytometry System



DNA Sequencer



**Genome Analyzer Iix
System**



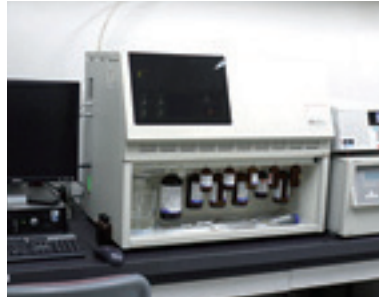
Real-Time PCR System



LTQ Orbitrap XL



TSQ Vantage



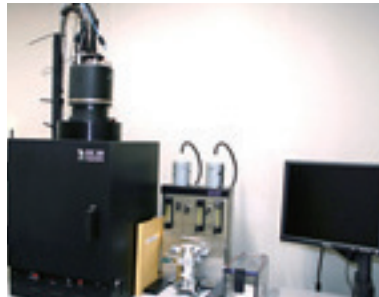
Protein Sequencer



MALDI-TOF MS



GC-MS



In vivo Imaging System



Botanical Greenhouses



Animal Experimentation Facility



Liquid Nitrogen Cryopreservation System



Graduate School of
Biological Sciences